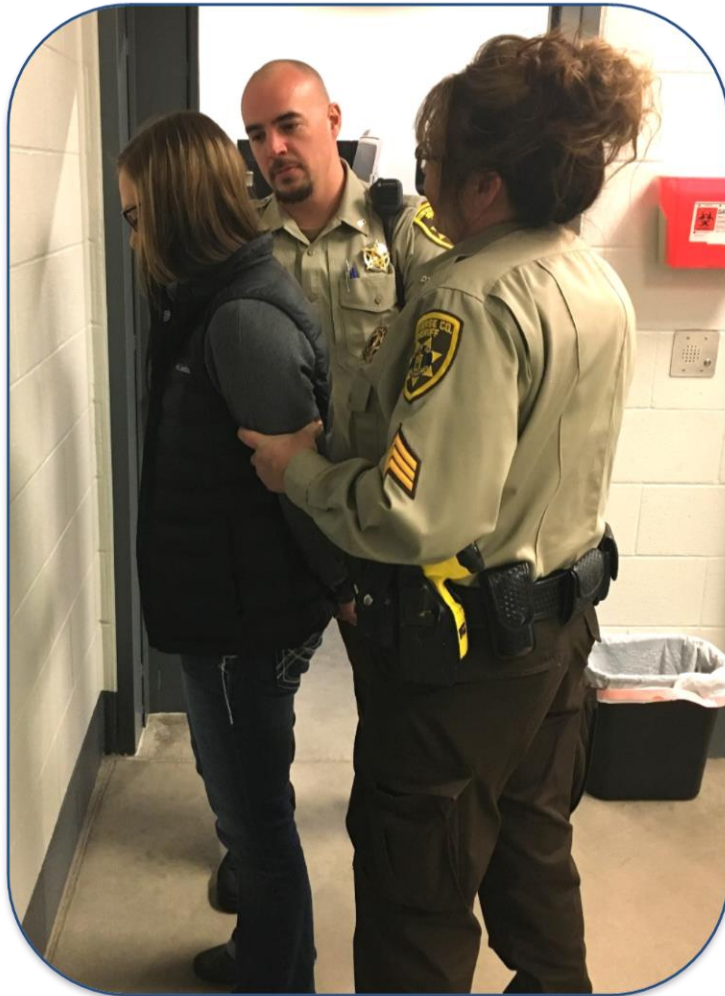


# Supplemental Report

2022

## ALCOHOL and CRIME in WYOMING



**Wyoming Association of Sheriffs  
and Chiefs of Police**

# WYOMING ASSOCIATION OF SHERIFFS AND CHIEFS OF POLICE

## ALCOHOL AND CRIME IN WYOMING: 2022 Supplemental Report

April 2022

The Wyoming Association of Sheriffs and Chiefs of Police has been collecting and analyzing substance-involved data from persons who have been arrested and booked into county detention facilities in Wyoming since 2005. The Association publishes the results of the analysis each year in two reports. These reports provide the data analysis necessary for state and community leaders, prevention specialists, and law enforcement administrators to devise and implement effective strategies to reduce substance-involved crime in Wyoming. This project was managed by Johnson and Associates of Douglas, Wyoming. The report was authored by Ernest L. Johnson, Director of Services.

# Alcohol and Crime in Wyoming - 2022 Supplemental Report

---

---

## INTRODUCTION

The report contains alcohol-related information collected in all twenty-three counties in the State of Wyoming for a period of twelve months (January 1 through December 31, 2022) by the Wyoming Association of Sheriffs and Chiefs of Police. Information was collected from a total of 9,080 persons who were arrested and subsequently detained in a county detention facility.

This report provides detailed county specific alcohol-related information and is a supplement to the Alcohol and Crime in Wyoming – 2022<sup>1</sup> report.

## TABLE OF CONTENTS

1. ALBANY	.....	1-4
2. BIG HORN	.....	5-8
3. CAMPBELL	.....	9-12
4. CARBON	.....	13-16
5. CONVERSE	.....	17-20
6. CROOK	.....	21-24
7. FREMONT	.....	25-28
8. GOSHEN	.....	29-32
9. HOT SPRINGS	.....	33-36
10. JOHNSON	.....	37-40
11. LARAMIE	.....	41-44
12. LINCOLN	.....	45-48
13. NATRONA	.....	49-52
14. NIOBRARA	.....	53-56
15. PARK	.....	57-60
16. PLATTE	.....	61-64
17. SHERIDAN	.....	65-68
18. SUBLETTE	.....	69-72
19. SWEETWATER	.....	73-76
20. TETON	.....	77-80
21. UINTA	.....	81-84
22. WASHAKIE	.....	85-89
23. WESTON	.....	90-93
24. Acknowledgements	.....	94
25. Project Manager Vita	.....	95-96

---

<sup>1</sup> A PDF copy of the main report can be downloaded at <http://wascop.com> and <http://jandaconsulting.com>

**Albany County Arrests**  
**January 1, 2022 - December 31, 2022**

**Numbers by Department**

County Department	Total Offenses	Misde-meanor	Felony	Domestic Violence	Resist Arrest	Assault	Public Intox	Alcohol Involved	Drugs Involved	Traffic Crash	Female	Male	Average Age
Albany County	442	393	60	21	18	6	58	288	69	27	104	338	32.22
Albany SO	77	65	16	2	2			45	21	4	21	56	31.31
Laramie PD	275	248	32	19	16	4	54	176	23	13	65	210	31.77
WHP	66	58	10			2	1	46	23	10	10	56	38.32
UW PD	24	22	2				3	21	2		8	16	23.58

**Percents by Department\***

County Department	Total Offenses	Misde-meanor	Felony	Domestic Violence	Resist Arrest	Assault	Public Intox	Alcohol Involved	Drugs Involved	Traffic Crash	Female	Male
Albany County	442	88.91%	13.57%	4.75%	4.07%	1.36%	13.12%	65.16%	15.61%	6.11%	23.53%	76.47%
Albany SO	77	84.42%	20.78%	2.60%	2.60%			58.44%	27.27%	5.19%	27.27%	72.73%
Laramie PD	275	90.18%	11.64%	6.91%	5.82%	1.45%	19.64%	64.00%	8.36%	4.73%	23.64%	76.36%
WHP	66	87.88%	15.15%			3.03%	1.52%	69.70%	34.85%	15.15%	15.15%	84.85%
UW PD	24	91.67%	8.33%				12.50%	87.50%	8.33%		33.33%	66.67%

\*Total percents may not equal 100 due to lack of information, or a single arrest involving multiple crimes.

**Albany County Arrests**  
January 1, 2022 - December 31, 2022

**MIP Arrests**

County Department	Total Underage Offenses	MIP Arrests	% MIP of Total	Average MIP BAC
Albany County	68	20	29.41%	0.136
Albany SO	7			
Laramie PD	41	10	24.39%	0.158
WHP	4			
UW PD	16	10	62.50%	0.121

**Meth, Drugs & Public Intoxication**

County Department	Total Offenses	Meth Involved	Marijuana Involved	Drugs Involved	Public Intox.	Pub. Intox. Ave. BAC
Albany County	442	18	39	69	58	0.264
Albany SO	77	10	11	21		
Laramie PD	275	6	11	23	54	0.251
WHP	66	2		23	1	
UW PD	24		17	2	3	0.333

**DUI Arrests**

County Department	Total Offenses	DUI Offenses	% DUI Of Total	Ave. BAC	DUI Involving Drugs	% DUI involving Drugs
Albany County	442	194	43.89%	0.157	39	20.10%
Albany SO	77	43	55.84%	0.160	10	23.26%
Laramie PD	275	93	33.82%	0.162	10	10.75%
WHP	66	52	78.79%	0.146	17	32.69%
UW PD	24	6	25.00%	0.136	2	33.33%

**Traffic Crashes**

County Department	Traffic Crashes	Alcohol Involved	% Alcohol Involved	Ave. BAC	Drugs Involved	% Drugs Involved
Albany County	27	19	70.37%	0.190	10	37.04%
Albany SO	4	3	75.00%	0.173	1	25.00%
Laramie PD	13	9	69.23%	0.325	2	15.38%
WHP	10	7	70.00%	0.080	7	70.00%
UW PD						

**Underage DUI Arrests**

County Department	DUI Offenses	Underage Offenses	% DUI Of Total	Ave. BAC	DUI Involving Drugs	% DUI involving Drugs
Albany County	194	23	11.86%	0.131	5	21.74%
Albany SO	43	2	4.65%	0.125		
Laramie PD	93	16	17.20%	0.123	4	25.00%
WHP	52	4	7.69%	0.190	1	25.00%
UW PD	6	1	16.67%	0.030		

**Warrant Arrests\***

County Department	Warrant Arrests
Albany County	153
Albany SO	30
Laramie PD	106
WHP	5
UWPD	12

\*Independent Statistic

**Albany County Arrests**  
January 1, 2022 - December 31, 2022

**Total Offenses**

County Department	Total Offenses	Number Involving Alcohol	Percent Involving Alcohol	Number Involving Drugs	Percent Involving Drugs
Albany County	442	288	65.16%	69	15.61%
Albany SO	77	45	58.44%	21	27.27%
Laramie PD	275	176	64.00%	23	8.36%
WHP	66	46	69.70%	23	34.85%
UW PD	24	21	87.50%	2	8.33%

**Domestic Violence**

County Department	Domestic Violence Offenses	Number Involving Alcohol	Percent Involving Alcohol	Number Involving Drugs	Percent Involving Drugs
Albany County	21	9	42.86%	1	4.76%
Albany SO	2	2	100.00%	1	50.00%
Laramie PD	19	7	36.84%		
WHP					
UW PD					

**Felony Offenses**

County Department	Felony Offenses	Number Involving Alcohol	Percent Involving Alcohol	Number Involving Drugs	Percent Involving Drugs
Albany County	60	8	13.33%	19	31.67%
Albany SO	16	2	12.50%	9	56.25%
Laramie PD	32	5	15.63%	4	12.50%
WHP	10	1	10.00%	6	60.00%
UW PD	2				

**Resisting Arrests**

County Department	Resisting Arrest Offenses	Number Involving Alcohol	Percent Involving Alcohol	Number Involving Drugs	Percent Involving Drugs
Albany County	18	11	61.11%	2	11.11%
Albany SO	2	1	50.00%		
Laramie PD	16	10	62.50%	2	12.50%
WHP					
UW PD					

**Misdemeanor Offenses**

County Department	Misdemeanor Offenses	Number Involving Alcohol	Percent Involving Alcohol	Number Involving Drugs	Percent Involving Drugs
Albany County	393	284	72.26%	56	14.25%
Albany SO	65	45	69.23%	15	23.08%
Laramie PD	248	172	69.35%	20	8.06%
WHP	58	46	79.31%	19	32.76%
UW PD	22	21	95.45%	2	9.09%

**Assault**

County Department	Assault Offenses	Number Involving Alcohol	Percent Involving Alcohol	Number Involving Drugs	Percent Involving Drugs
Albany County	6	4	66.67%		
Albany SO					
Laramie PD	4	3	75.00%		
WHP	2	1	50.00%		
UW PD					

**Albany County Arrests**  
**January 1, 2022 - December 31, 2022**

County Department	Location of Consumption							Point of Sale				
	Alcohol Involved	Home	Bar	Private Party	Public Event	Vehicle	No Response	Home	Retail Liquor	Private Party	Public Event	No Response
Albany County	288	4	14	2	4	1	14		5	5	4	1
Albany SO	45	1	4				5		3	3		
Laramie PD	176	2	7		1		8		1	1	1	1
WHP	46		1	1	2	1	1				3	
UW PD	21	1	2	1	1				1	1		

Bar Name	Albany SO	Laramie PD	UWPD	WHP	Grand Total
BUCKHORN BAR	1	1			2
COOPERS CORNER		1			1
LOVEJOYS BAR & GRILL				1	1
MINGLES OF LARAMIE	2	1			3
RANGER LIQUOR MART & BAR		1	1		2
ROXIES ON GRAND		1			1
<b>Total</b>	<b>3</b>	<b>5</b>	<b>1</b>	<b>1</b>	<b>10</b>

\*Total of percents in Location of Consumption and Point of Sale categories may exceed 100% due to single arrests involving more than one location or point of sale.

No public events named in alcohol collection reports.

**Big Horn County Arrests**  
**January 1, 2022 - December 31, 2022**

**Numbers by Department**

County Department	Total Offenses	Misde-meanor	Felony	Domestic Violence	Resist Arrest	Assault	Public Intox	Alcohol Involved	Drugs Involved	Traffic Crash	Female	Male	Average Age
Big Horn County	80	74	7	10	3	6	6	49	17	10	18	62	40.34
Basin PD	7	6	1	2		2		4	1	1	1	6	48.29
Big Horn SO	35	32	4	3		2	2	22	7	4	7	28	36.69
Greybull PD	22	22		4	3		4	12	7	1	6	16	41.64
Lovell PD	11	10	1	1		2		7	2	2	3	8	39.82
Other	1		1									1	42.00
WHP	4	4						4		2	1	3	52.25

**Percents by Department\***

County Department	Total Offenses	Misde-meanor	Felony	Domestic Violence	Resist Arrest	Assault	Public Intox	Alcohol Involved	Drugs Involved	Traffic Crash	Female	Male
Big Horn County	80	92.50%	8.75%	12.50%	3.75%	7.50%	7.50%	61.25%	21.25%	12.50%	22.50%	77.50%
Basin PD	7	85.71%	14.29%	28.57%		28.57%		57.14%	14.29%	14.29%	14.29%	85.71%
Big Horn SO	35	91.43%	11.43%	8.57%		5.71%	5.71%	62.86%	20.00%	11.43%	20.00%	80.00%
Greybull PD	22	100.00%		18.18%	13.64%		18.18%	54.55%	31.82%	4.55%	27.27%	72.73%
Lovell PD	11	90.91%	9.09%	9.09%		18.18%		63.64%	18.18%	18.18%	27.27%	72.73%
Other	1		100.00%									100.00%
WHP	4	100.00%						100.00%		50.00%	25.00%	75.00%

\*Total percents may not equal 100 due to lack of information, or a single arrests involving multiple crimes.



**Big Horn County Arrests**  
January 1, 2022 - December 31, 2022

**MIP Arrests**

County Department	Total Underage Offenses	MIP Arrests	% MIP of Total	Average MIP BAC
Big Horn County	2			
Basin PD				
Big Horn SO	2			
Greybull PD				
Lovell PD				
Other				
WHP				

**Meth, Drugs & Public Intoxication**

County Department	Total Offenses	Meth Involved	Marijuana Involved	Drugs Involved	Public Intox.	Pub. Intox. Ave. BAC
Big Horn County	80	11	4	17	6	0.148
Basin PD	7	1		1		
Big Horn SO	35	5	2	7	2	0.170
Greybull PD	22	4	2	7	4	0.125
Lovell PD	11	1		2		
Other	1					
WHP	4					

**DUI Arrests**

County Department	Total Offenses	DUI Offenses	% DUI Of Total	Ave. BAC	DUI Involving Drugs	% DUI involving Drugs
Big Horn County	80	29	36.25%	0.173	1	3.45%
Basin PD	7	2	28.57%	0.220		
Big Horn SO	35	14	40.00%	0.154		
Greybull PD	22	6	27.27%	0.193	1	16.67%
Lovell PD	11	3	27.27%	0.163		
Other	1					
WHP	4	4	100.00%	0.220		

**Traffic Crashes**

County Department	Traffic Crashes	Alcohol Involved	% Alcohol Involved	Ave. BAC	Drugs Involved	% Drugs Involved
Big Horn County	10	9	90.00%	0.180		
Basin PD	1	1	100.00%			
Big Horn SO	4	4	100.00%	0.200		
Greybull PD	1					
Lovell PD	2	2	100.00%	0.150		
Other						
WHP	2	2	100.00%	0.220		

**Underage DUI Arrests**

County Department	DUI Offenses	Underage Offenses	% DUI Of Total	Ave. BAC	DUI Involving Drugs	% DUI involving Drugs
Big Horn County	29	1	3.45%	0.180		
Basin PD	2					
Big Horn SO	14	1	7.14%	0.180		
Greybull PD	6					
Lovell PD	3					
Other						
WHP	4					

**Warrant Arrests\***

County Department	Warrant Arrests
Big Horn County	59
Basin PD	3
Big Horn SO	38
Greybull PD	9
Lovell PD	8
WHP	1

\*Independent Statistic

**Big Horn County Arrests**  
January 1, 2022 - December 31, 2022

**Total Offenses**

County Department	Total Offenses	Number Involving Alcohol	Percent Involving Alcohol	Number Involving Drugs	Percent Involving Drugs
Big Horn County	80	49	61.25%	17	21.25%
Basin PD	7	4	57.14%	1	14.29%
Big Horn SO	35	22	62.86%	7	20.00%
Greybull PD	22	12	54.55%	7	31.82%
Lovell PD	11	7	63.64%	2	18.18%
Other	1				
WHP	4	4	100.00%		

**Felony Offenses**

County Department	Felony Offenses	Number Involving Alcohol	Percent Involving Alcohol	Number Involving Drugs	Percent Involving Drugs
Big Horn County	7	3	42.86%	1	14.29%
Basin PD	1	1	100.00%		
Big Horn SO	4	1	25.00%	1	25.00%
Greybull PD					
Lovell PD	1	1	100.00%		
Other	1				
WHP					

**Misdemeanor Offenses**

County Department	Misdemeanor Offenses	Number Involving Alcohol	Percent Involving Alcohol	Number Involving Drugs	Percent Involving Drugs
Big Horn County	74	47	63.51%	16	21.62%
Basin PD	6	3	50.00%	1	16.67%
Big Horn SO	32	22	68.75%	6	18.75%
Greybull PD	22	12	54.55%	7	31.82%
Lovell PD	10	6	60.00%	2	20.00%
Other					
WHP	4	4	100.00%		

**Domestic Violence**

County Department	Domestic Violence Offenses	Number Involving Alcohol	Percent Involving Alcohol	Number Involving Drugs	Percent Involving Drugs
Big Horn County	10	6	60.00%		
Basin PD	2	1	50.00%		
Big Horn SO	3	2	66.67%		
Greybull PD	4	2	50.00%		
Lovell PD	1	1	100.00%		
Other					
WHP					

**Resisting Arrests**

County Department	Resisting Arrest Offenses	Number Involving Alcohol	Percent Involving Alcohol	Number Involving Drugs	Percent Involving Drugs
Big Horn County	3	3	100.00%		
Basin PD					
Big Horn SO					
Greybull PD	3	3	100.00%		
Lovell PD					
Other					
WHP					

**Assault**

County Department	Assault Offenses	Number Involving Alcohol	Percent Involving Alcohol	Number Involving Drugs	Percent Involving Drugs
Big Horn County	6	2	33.33%		
Basin PD	2	1	50.00%		
Big Horn SO	2				
Greybull PD					
Lovell PD	2	1	50.00%		
Other					
WHP					

**Big Horn County Arrests**  
**January 1, 2022 - December 31, 2022**

County Department	Location of Consumption							Point of Sale				
	Alcohol Involved	Home	Bar	Private Party	Public Event	Vehicle	No Response	Home	Retail Liquor	Private Party	Public Event	No Response
Big Horn County	49	6	12	2		6	27		5	6	1	5
Basin PD	4		1			1	2		2	2		1
Big Horn SO	22	3	4	1		2	17			1		3
Greybull PD	12	1	5	1		1	3		3	3		1
Lovell PD	7	2	2			1	3					
Other												
WHP	4					1	2				1	

Bar Name	Basin PD	Big Horn SO	Greybull PD	Total
COMFORT ZONE (THE)	1			1
HARPERS SERVICE STATION			1	1
SILVER SPUR			2	2
SMOKEHOUSE SALOON			1	1
OTHER		1		1
<b>Total</b>	<b>1</b>	<b>1</b>	<b>4</b>	<b>6</b>

\*Total of percents in Location of Consumption and Point of Sale categories may exceed 100% due to single arrests involving more than one location or point of sale.

No public events named in alcohol collection reports.

**Campbell County**  
**January 1, 2022 - December 31, 2022**

**Numbers by Department**

County Department	Total Offenses	Misde-meanor	Felony	Domestic Violence	Resist Arrest	Assault	Public Intox	Alcohol Involved	Drugs Involved	Traffic Crash	Female	Male	Average Age
Campbell County	910	818	132	54		12	72	423	210	29	240	670	35.62
Campbell SO	313	279	51	12		3	2	112	96	6	80	233	34.74
Gillette PD	563	505	79	42		9	70	296	109	19	151	412	36.09
Other	3	3	1						1		1	2	24.75
WHP	31	31	1					15	4	4	8	23	37.13

**Percents by Department\***

County Department	Total Offenses	Misde-meanor	Felony	Domestic Violence	Resist Arrest	Assault	Public Intox	Alcohol Involved	Drugs Involved	Traffic Crash	Female	Male
Campbell County	910	89.89%	14.51%	5.93%		1.32%	7.91%	46.48%	23.08%	3.19%	26.37%	73.63%
Campbell SO	313	89.14%	16.29%	3.83%		0.96%	0.64%	35.78%	30.67%	1.92%	25.56%	74.44%
Gillette PD	563	89.70%	14.03%	7.46%		1.60%	12.43%	52.58%	19.36%	3.37%	26.82%	73.18%
Other	3	100.00%	33.33%						33.33%		33.33%	66.67%
WHP	31	100.00%	3.23%					48.39%	12.90%	12.90%	25.81%	74.19%

\*Total percents may not equal 100 due to lack of information, or a single arrest involving multiple crimes.

**Campbell County**  
**January 1, 2022 - December 31, 2022**

**MIP Arrests**

County Department	Total Underage Offenses	MIP Arrests	% MIP of Total	Average MIP BAC
Campbell County	77	1	1.30%	
Campbell SO	30	1	3.33%	
Gillette PD	43			
Other	2			
WHP	2			

**Meth, Drugs & Public Intoxication**

County Department	Total Offenses	Meth Involved	Marijuana Involved	Drugs Involved	Public Intox.	Pub. Intox. Ave. BAC
Campbell County	910	82	83	210	72	0.320
Campbell SO	313	27	53	96	2	
Gillette PD	563	54	29	109	70	0.320
Other	3		1	1		
WHP	31	1		4		

**DUI Arrests**

County Department	Total Offenses	DUI Offenses	% DUI Of Total	Ave. BAC	DUI Involving Drugs	% DUI involving Drugs
Campbell County	910	275	30.22%	0.153	24	8.73%
Campbell SO	313	94	30.03%	0.185	10	10.64%
Gillette PD	563	164	29.13%	0.144	12	7.32%
Other	3					
WHP	31	17	54.84%		2	11.76%

**Traffic Crashes**

County Department	Traffic Crashes	Alcohol Involved	% Alcohol Involved	Ave. BAC	Drugs Involved	% Drugs Involved
Campbell County	29	23	79.31%		3	10.34%
Campbell SO	6	4	66.67%		1	16.67%
Gillette PD	19	16	84.21%		2	10.53%
Other						
WHP	4	3	75.00%			

**Underage DUI Arrests**

County Department	DUI Offenses	Underage Offenses	% DUI Of Total	Ave. BAC	DUI Involving Drugs	% DUI involving Drugs
Campbell County	275	16	5.82%	0.190		
Campbell SO	94	8	8.51%	0.190		
Gillette PD	164	6	3.66%			
Other						
WHP	17	2	11.76%			

**Warrant Arrests\***

County Department	Warrant Arrests
Campbell County	1039
Campbell SO	683
Gillette PD	332
Other	5
WHP	19

\*Independent Statistic

Campbell County  
January 1, 2022 - December 31, 2022

**Total Offenses**

County Department	Total Offenses	Number Involving Alcohol	Percent Involving Alcohol	Number Involving Drugs	Percent Involving Drugs
Campbell County	910	423	46.48%	210	23.08%
Campbell SO	313	112	35.78%	96	30.67%
Gillette PD	563	296	52.58%	109	19.36%
Other	3			1	33.33%
WHP	31	15	48.39%	4	12.90%

**Felony Offenses**

County Department	Felony Offenses	Number Involving Alcohol	Percent Involving Alcohol	Number Involving Drugs	Percent Involving Drugs
Campbell County	132	19	14.39%	41	31.06%
Campbell SO	51	2	3.92%	18	35.29%
Gillette PD	79	17	21.52%	21	26.58%
Other	1			1	100.00%
WHP	1			1	100.00%

**Misdemeanor Offenses**

County Department	Misdemeanor Offenses	Number Involving Alcohol	Percent Involving Alcohol	Number Involving Drugs	Percent Involving Drugs
Campbell County	818	408	49.88%	185	22.62%
Campbell SO	279	111	39.78%	86	30.82%
Gillette PD	505	282	55.84%	94	18.61%
Other	3			1	33.33%
WHP	31	15	48.39%	4	12.90%

**Domestic Violence**

County Department	Domestic Violence Offenses	Number Involving Alcohol	Percent Involving Alcohol	Number Involving Drugs	Percent Involving Drugs
Campbell County	54	29	53.70%	2	3.70%
Campbell SO	12	4	33.33%		
Gillette PD	42	25	59.52%	2	4.76%
Other					
WHP					

**Resisting Arrests**

County Department	Resisting Arrest Offenses	Number Involving Alcohol	Percent Involving Alcohol	Number Involving Drugs	Percent Involving Drugs
Campbell County					
Campbell SO					
Gillette PD					
Other					
WHP					

**Assault**

County Department	Assault Offenses	Number Involving Alcohol	Percent Involving Alcohol	Number Involving Drugs	Percent Involving Drugs
Campbell County	12				
Campbell SO	3				
Gillette PD	9				
Other					
WHP					

Campbell County  
January 1, 2022 - December 31, 2022

County Department	Alcohol Involved	Location of Consumption						Point of Sale				
		Home	Bar	Private Party	Public Event	Vehicle	No Response	Home	Retail Liquor	Private Party	Public Event	No Response
Campbell County	423	125	190	13	2	20	447	7	83	82		58
Campbell SO	112	38	56	6	1	10	156	2	25	22		20
Gillette PD	296	86	129	7	1	8	278	5	54	58		37
Other							2					
WHP	15	1	5			2	11		4	2		1

Bar Name	Campbell			
	SO	Gillette PD	WHP	Total
AMERICAN LEGION #42		1		1
BOOT HILL	3	11		14
CENTER BAR	1			1
CREATIVE BEVERAGES		1		1
FIRESIDE LOUNGE	1	8	2	11
GOOD TIMES LIQUOR & LOUNGE		4		4
HANKS LOUNGE	4			4
LAKESIDE LIQUOR AND LOUNGE		1		1
LAS MARGARITAS		1		1
LEGENDS	1			1
MONTGOMERY BAR & HOTEL		3		3
OLD CHICAGO RESTAURANT	1			1
OTHER	1	2		3
OTHER SIDE BAR & GRILL	1	1		2
PATS DRIVE-UP LIQUOR		1		1
PRIME RIB RESTAURANT		2		2
RAMADA PLAZA GILLETTE		2		2
WYOMING DOWNS OTB 11		1		1
WYOMING DOWNS OTB 7	2	2		4
<b>Total</b>	<b>15</b>	<b>41</b>	<b>2</b>	<b>58</b>

\*Total of percents in Location of Consumption and Point of Sale categories may exceed 100% due to single arrests involving more than one location or point of sale.

No public events named in alcohol collection reports.

**Carbon County Arrests**  
**January 1, 2022 - December 31, 2022**

**Numbers by Department**

County Department	Total Offenses	Misde-meanor	Felony	Domestic Violence	Resist Arrest	Assault	Public Intox	Alcohol Involved	Drugs Involved	Traffic Crash	Female	Male	Average Age
Carbon County	369	306	99	23	5	23	8	131	132	20	81	288	35.79
Carbon SO	77	69	16	5	1	2	1	27	7	3	14	63	36.77
Hanna PD	4	4	1	1			1	1	1			4	48.25
Medicine Bow MO	3	2	1					1	2		1	2	21.67
Rawlins PD	168	143	37	14	2	16	3	67	60	11	44	124	35.35
Saratoga PD	15	14	1	2		2	3	8	1	1	3	12	39.47
Sinclair PD	1	1				1		1				1	42.00
WHP	99	73	41	1	2	2		26	60	5	18	81	35.05
Other	2		2						1		1	1	38.00

**Percents by Department\***

County Department	Total Offenses	Misde-meanor	Felony	Domestic Violence	Resist Arrest	Assault	Public Intox	Alcohol Involved	Drugs Involved	Traffic Crash	Female	Male
Carbon County	369	82.93%	26.83%	6.23%	1.36%	6.23%	2.17%	35.50%	35.77%	5.42%	21.95%	78.05%
Carbon SO	77	89.61%	20.78%	6.49%	1.30%	2.60%	1.30%	35.06%	9.09%	3.90%	18.18%	81.82%
Hanna PD	4	100.00%	25.00%	25.00%			25.00%	25.00%	25.00%			100.00%
Medicine Bow MO	3	66.67%	33.33%					33.33%	66.67%		33.33%	66.67%
Rawlins PD	168	85.12%	22.02%	8.33%	1.19%	9.52%	1.79%	39.88%	35.71%	6.55%	26.19%	73.81%
Saratoga PD	15	93.33%	6.67%	13.33%		13.33%	20.00%	53.33%	6.67%	6.67%	20.00%	80.00%
Sinclair PD	1	100.00%				100.00%		100.00%				100.00%
WHP	99	73.74%	41.41%	1.01%	2.02%	2.02%		26.26%	60.61%	5.05%	18.18%	81.82%
Other	2		100.00%						50.00%		50.00%	50.00%

\*Total percents may not equal 100 due to lack of information, or a single arrest involving multiple crimes.



**Carbon County Arrests**  
January 1, 2022 - December 31, 2022

**MIP Arrests**

County Department	Total Underage Offenses	MIP Arrests	% MIP of Total	Average MIP BAC
Carbon County	25	4	16.00%	0.130
Carbon SO	3			
Hanna PD				
Medicine Bow MO	1			
Rawlins PD	13	3	23.08%	0.130
Saratoga PD	3			
Sinclair PD				
WHP	5	1	20.00%	
Other				

**Meth, Drugs & Public Intoxication**

County Department	Total Offenses	Meth Involved	Marijuana Involved	Drugs Involved	Public Intox.	Pub. Intox. Ave. BAC
Carbon County	369	44	83	132	8	0.195
Carbon SO	77	3	3	7	1	0.150
Hanna PD	4		1	1	1	
Medicine Bow MO	3		2	2		
Rawlins PD	168	27	32	60	3	0.170
Saratoga PD	15		1	1	3	0.230
Sinclair PD	1					
WHP	99	13	44	60		
Other	2	1		1		

**DUI Arrests**

County Department	Total Offenses	DUI Offenses	% DUI Of Total	Ave. BAC	DUI Involving Drugs	% DUI involving Drugs
Carbon County	369	131	35.50%	0.181	45	34.35%
Carbon SO	77	27	35.06%	0.207	3	11.11%
Hanna PD	4					
Medicine Bow MO	3	2	66.67%	0.050	1	50.00%
Rawlins PD	168	53	31.55%	0.170	21	39.62%
Saratoga PD	15	4	26.67%	0.285		
Sinclair PD	1					
WHP	99	45	45.45%	0.170	20	44.44%
Other	2					

**Traffic Crashes**

County Department	Traffic Crashes	Alcohol Involved	% Alcohol Involved	Ave. BAC	Drugs Involved	% Drugs Involved
Carbon County	20	7	35.00%	0.217	10	50.00%
Carbon SO	3	1	33.33%	0.250		
Hanna PD						
Medicine Bow MO						
Rawlins PD	11	3	27.27%	0.187	7	63.64%
Saratoga PD	1	1	100.00%	0.380		
Sinclair PD						
WHP	5	2	40.00%	0.110	3	60.00%
Other						

**Underage DUI Arrests**

County Department	DUI Offenses	Underage Offenses	% DUI Of Total	Ave. BAC	DUI Involving Drugs	% DUI involving Drugs
Carbon County	131	10	7.63%	0.124	6	60.00%
Carbon SO	27	1	3.70%	0.220		
Hanna PD						
Medicine Bow MO	2	1	50.00%		1	100.00%
Rawlins PD	53	5	9.43%	0.120	4	80.00%
Saratoga PD	4					
Sinclair PD						
WHP	45	3	6.67%	0.080	1	33.33%
Other						

**Warrant Arrests\***

County Department	Warrant Arrests
Carbon County	300
Carbon SO	172
Encampment PD	1
Hanna PD	1
Medicine Bow MO	1
Rawlins PD	76
Saratoga PD	10
Sinclair PD	2
WHP	35
Other	2

\*Independent Statistic

**Carbon County Arrests**  
January 1, 2022 - December 31, 2022

**Total Offenses**

County Department	Total Offenses	Number Involving Alcohol	Percent Involving Alcohol	Number Involving Drugs	Percent Involving Drugs
Carbon County	369	131	35.50%	132	35.77%
Carbon SO	77	27	35.06%	7	9.09%
Hanna PD	4	1	25.00%	1	25.00%
Medicine Bow MO	3	1	33.33%	2	66.67%
Rawlins PD	168	67	39.88%	60	35.71%
Saratoga PD	15	8	53.33%	1	6.67%
Sinclair PD	1	1	100.00%		
WHP	99	26	26.26%	60	60.61%
Other	2			1	50.00%

**Domestic Violence**

County Department	Domestic Violence Offenses	Number Involving Alcohol	Percent Involving Alcohol	Number Involving Drugs	Percent Involving Drugs
Carbon County	23	11	47.83%	3	13.04%
Carbon SO	5	2	40.00%		0.00%
Hanna PD	1				0.00%
Medicine Bow MO					
Rawlins PD	14	8	57.14%	1	7.14%
Saratoga PD	2	1	50.00%	1	50.00%
Sinclair PD					
WHP	1			1	100.00%
Other					

**Felony Offenses**

County Department	Felony Offenses	Number Involving Alcohol	Percent Involving Alcohol	Number Involving Drugs	Percent Involving Drugs
Carbon County	99	5	5.05%	57	57.58%
Carbon SO	16			2	12.50%
Hanna PD	1			1	100.00%
Medicine Bow MO	1			1	100.00%
Rawlins PD	37	5	13.51%	19	51.35%
Saratoga PD	1				
Sinclair PD					
WHP	41			33	80.49%
Other	2			1	50.00%

**Resisting Arrests**

County Department	Resisting Arrest Offenses	Number Involving Alcohol	Percent Involving Alcohol	Number Involving Drugs	Percent Involving Drugs
Carbon County	5	2	40.00%	3	60.00%
Carbon SO	1				
Hanna PD					
Medicine Bow MO					
Rawlins PD	2	2	100.00%	1	50.00%
Saratoga PD					
Sinclair PD					
WHP	2			2	100.00%
Other					

**Misdemeanor Offenses**

County Department	Misdemeanor Offenses	Number Involving Alcohol	Percent Involving Alcohol	Number Involving Drugs	Percent Involving Drugs
Carbon County	306	130	42.48%	95	31.05%
Carbon SO	69	27	39.13%	6	8.70%
Hanna PD	4	1	25.00%	1	25.00%
Medicine Bow MO	2	1	50.00%	1	50.00%
Rawlins PD	143	66	46.15%	49	34.27%
Saratoga PD	14	8	57.14%	1	7.14%
Sinclair PD	1	1	100.00%		
WHP	73	26	35.62%	37	50.68%
Other					

**Assault**

County Department	Assault Offenses	Number Involving Alcohol	Percent Involving Alcohol	Number Involving Drugs	Percent Involving Drugs
Carbon County	23	7	30.43%	3	13.04%
Carbon SO	2	1	50.00%		
Hanna PD					
Medicine Bow MO					
Rawlins PD	16	5	31.25%	2	12.50%
Saratoga PD	2				
Sinclair PD	1	1	100.00%		
WHP	2			1	50.00%
Other					

**Carbon County Arrests  
January 1, 2022 - December 31, 2022**

County Department	Location of Consumption							Point of Sale				
	Alcohol Involved	Home	Bar	Private Party	Public Event	Vehicle	No Response	Home	Retail Liquor	Private Party	Public Event	No Response
Carbon County	131	28	42	11		43	66		18	22	1	7
Carbon SO	27	3	8	2		12	14		4	4	1	1
Hanna PD	1					1	2		1	1		
Medicine Bow MO	1			1			1		1	1		
Rawlins PD	67	21	29	5		10	37		12	15		6
Saratoga PD	8	2	2	1			2					
Sinclair PD	1	1	1									
WHP	26	1	2	2		20	10			1		
Other												

Bar Name	Carbon	Rawlins	WHP	Total
	CO SO	PD		
ECONOLOGDE OF RAWLINS		1		1
HOLE IN THE WALL BAR		2		2
OTHER	1			1
PEPPERMILL BAR AND GRILL		3		3
RIFLEMAN CLUB BAR		1		1
RUSTIC BAR			1	1
TKEG SPIRITS & SALOON	1	1		2
WHISTLE PIG SALOON BEAVER LIQUOR	3			3
<b>Total</b>	<b>5</b>	<b>8</b>	<b>1</b>	<b>14</b>

\*Total of percents in Location of Consumption and Point of Sale categories may exceed 100% due to single arrests involving more than one location or point of sale.

No public events named in alcohol collection reports.

**Converse County**  
**January 1, 2022 - December 31, 2022**

**Numbers by Department**

County Department	Total Offenses	Misde-meanor	Felony	Domestic Violence	Resist Arrest	Assault	Public Intox	Alcohol Involved	Drugs Involved	Traffic Crash	Female	Male	Average Age
Converse County	284	262	36	14	2	5	5	128	96	25	70	214	34.81
Converse SO	87	78	18	2	1		1	32	40	11	19	68	35.00
Douglas PD	142	132	12	8		4	4	59	43	9	41	101	33.96
Glenrock PD	21	18	3	4	1	1		15	2	1	3	18	34.29
WHP	34	34	3					22	11	4	7	27	38.18

**Percents by Department\***

County Department	Total Offenses	Misde-meanor	Felony	Domestic Violence	Resist Arrest	Assault	Public Intox	Alcohol Involved	Drugs Involved	Traffic Crash	Female	Male
Converse County	284	92.25%	12.68%	4.93%	0.70%	1.76%	1.76%	45.07%	33.80%	8.80%	24.65%	75.35%
Converse SO	87	89.66%	20.69%	2.30%	1.15%		1.15%	36.78%	45.98%	12.64%	21.84%	78.16%
Douglas PD	142	92.96%	8.45%	5.63%		2.82%	2.82%	41.55%	30.28%	6.34%	28.87%	71.13%
Glenrock PD	21	85.71%	14.29%	19.05%	4.76%	4.76%		71.43%	9.52%	4.76%	14.29%	85.71%
WHP	34	100.00%	8.82%					64.71%	32.35%	11.76%	20.59%	79.41%

\*Total percents may not equal 100 due to lack of information, or single arrests involving multiple crimes.

**Converse County**  
January 1, 2022 - December 31, 2022

**MIP Arrests**

County Department	Total Underage Offenses	MIP Arrests	% MIP of Total	Average MIP BAC
Converse County	25	8	32.00%	0.135
Converse SO	9	3	33.33%	0.140
Douglas PD	12	4	33.33%	0.145
Glenrock PD	3	1	33.33%	0.11
WHP	1			

**Meth, Drugs & Public Intoxication**

County Department	Total Offenses	Meth Involved	Marijuana Involved	Drugs Involved	Public Intox.	Pub. Intox. Ave. BAC
Converse County	284	56	38	96	5	0.278
Converse SO	87	26	15	40	1	0.240
Douglas PD	142	25	15	43	4	0.290
Glenrock PD	21	1	1	2		
WHP	34	4	7	11		

**DUI Arrests**

County Department	Total Offenses	DUI Offenses	% DUI Of Total	Ave. BAC	DUI Involving Drugs	% DUI involving Drugs
Converse County	284	91	32.04%	0.164	15	16.48%
Converse SO	87	25	28.74%	0.154	3	12.00%
Douglas PD	142	34	23.94%	0.173	6	17.65%
Glenrock PD	21	6	28.57%	0.172		
WHP	34	26	76.47%	0.159	6	23.08%

**Traffic Crashes**

County Department	Traffic Crashes	Alcohol Involved	% Alcohol Involved	Ave. BAC	Drugs Involved	% Drugs Involved
Converse County	25	21	84.00%	0.185	3	12.00%
Converse SO	11	11	100.00%	0.158	2	18.18%
Douglas PD	9	6	66.67%	0.208	1	11.11%
Glenrock PD	1	1	100.00%	0.260		
WHP	4	3	75.00%	0.210		

**Underage DUI Arrests**

County Department	DUI Offenses	Underage Offenses	% DUI Of Total	Ave. BAC	DUI Involving Drugs	% DUI involving Drugs
Converse County	91	7	7.69%	0.119	1	14.29%
Converse SO	25	3	12.00%	0.143		
Douglas PD	34	1	2.94%	0.150	1	100.00%
Glenrock PD	6	2	33.33%	0.105		
WHP	26	1	3.85%	0.040		

**Warrant Arrests\***

County Department	Warrant Arrests
Converse County	152
Converse SO	34
Douglas PD	89
Glenrock PD	22
WHP	7

\*Independent Statistic

**Converse County**  
**January 1, 2022 - December 31, 2022**

**Total Offenses**

County Department	Total Offenses	Number Involving Alcohol	Percent Involving Alcohol	Number Involving Drugs	Percent Involving Drugs
Converse County	284	128	45.07%	96	33.80%
Converse SO	87	32	36.78%	40	45.98%
Douglas PD	142	59	41.55%	43	30.28%
Glenrock PD	21	15	71.43%	2	9.52%
WHP	34	22	64.71%	11	32.35%

**Felony Offenses**

County Department	Felony Offenses	Number Involving Alcohol	Percent Involving Alcohol	Number Involving Drugs	Percent Involving Drugs
Converse County	36	10	27.78%	20	55.56%
Converse SO	18	3	16.67%	10	55.56%
Douglas PD	12	3	25.00%	8	66.67%
Glenrock PD	3	2	66.67%		
WHP	3	2	66.67%	2	66.67%

**Misdemeanor Offenses**

County Department	Misdemeanor Offenses	Number Involving Alcohol	Percent Involving Alcohol	Number Involving Drugs	Percent Involving Drugs
Converse County	262	121	46.18%	88	33.59%
Converse SO	78	30	38.46%	38	48.72%
Douglas PD	132	56	42.42%	37	28.03%
Glenrock PD	18	13	72.22%	2	11.11%
WHP	34	22	64.71%	11	32.35%

**Domestic Violence**

County Department	Domestic Violence Offenses	Number Involving Alcohol	Percent Involving Alcohol	Number Involving Drugs	Percent Involving Drugs
Converse County	14	8	57.14%	1	7.14%
Converse SO	2				
Douglas PD	8	5	62.50%	1	12.50%
Glenrock PD	4	3	75.00%		
WHP					

**Resisting Arrests**

County Department	Resisting Arrest Offenses	Number Involving Alcohol	Percent Involving Alcohol	Number Involving Drugs	Percent Involving Drugs
Converse County	2	1	50.00%	1	50.00%
Converse SO	1			1	100.00%
Douglas PD					
Glenrock PD	1	1	100.00%		
WHP					

**Assault**

County Department	Assault Offenses	Number Involving Alcohol	Percent Involving Alcohol	Number Involving Drugs	Percent Involving Drugs
Converse County	5	4	80.00%		
Converse SO					
Douglas PD	4	3	75.00%		
Glenrock PD	1	1	100.00%		
WHP					

**Converse County**  
**January 1, 2022 - December 31, 2022**

County Department	Location of Consumption							Point of Sale				
	Alcohol Involved	Home	Bar	Private Party	Public Event	Vehicle	No Response	Home	Retail Liquor	Private Party	Public Event	No Response
Converse County	128	66	107	3	3	22	92	2	44	43	2	35
Converse SO	32	25	35		1	7	30		10	8		19
Douglas PD	59	31	49	2	2	5	49	2	17	21	2	16
Glenrock PD	15	7	14			3	1		9	9		
WHP	22	3	9	1		7	12		8	5		

Bar Name	Converse SO	Douglas PD	Glenrock PD	WHP	Total
FOUR ACES		1	2		3
COLLEGE INN BAR		4			4
DEER CREEK BAR & LOUNGE			2		2
DOUGLAS DISCOUNT LIQUORS & TOBACCO	1	1			2
KNOTTY PINE SALOON (THE)	1				1
LABONTE BAR		4			4
NORTHGATE LIQUOR & LOUNGE	2	1			3
OTHER	1			3	4
PLAINS TRADING POST	1				1
SHORELINER			3		3
WATERHOLE (THE)	2	7			9
<b>Total</b>	<b>8</b>	<b>18</b>	<b>7</b>	<b>3</b>	<b>36</b>

\*Total of percents in Location of Consumption and Point of Sale categories may exceed 100% due to single arrests involving more than one location or point of sale.

No public events named in alcohol collection reports.

**Crook County Arrests**  
**January 1, 2022 - December 31, 2022**

**Numbers by Department**

County Department	Total Offenses	Misde-meanor	Felony	Domestic Violence	Resist Arrest	Assault	Public Intox	Alcohol Involved	Drugs Involved	Traffic Crash	Female	Male	Average Age
Crook County	71	61	11	4	2	1	2	41	22	3	9	62	38.55
Crook SO	35	30	5	3				15	13	2	3	32	36.54
Hulett PD	1	1			1							1	60.00
Moorcroft PD	11	11				1		11		1	2	9	42.55
WHP	20	15	6	1				11	9		3	17	40.35
Other	4	4			1		2	4			1	3	30.75

**Percents by Department\***

County Department	Total Offenses	Misde-meanor	Felony	Domestic Violence	Resist Arrest	Assault	Public Intox	Alcohol Involved	Drugs Involved	Traffic Crash	Female	Male
Crook County	71	85.92%	15.49%	5.63%	2.82%	1.41%	2.82%	57.75%	30.99%	4.23%	12.68%	87.32%
Crook SO	35	85.71%	14.29%	8.57%				42.86%	37.14%	5.71%	8.57%	91.43%
Hulett PD	1	100.00%			100.00%							100.00%
Moorcroft PD	11	100.00%				9.09%		100.00%		9.09%	18.18%	81.82%
WHP	20	75.00%	30.00%	5.00%				55.00%	45.00%		15.00%	85.00%
Other	4	100.00%			25.00%		50.00%	100.00%			25.00%	75.00%

\*Total percents may not equal 100 due to lack of information, or single arrests involving multiple crimes.



**Crook County Arrests**  
January 1, 2022 - December 31, 2022

**MIP Arrests**

County Department	Total Underage Offenses	MIP Arrests	% MIP of Total	Average MIP BAC
Crook County	7	2	28.57%	0.060
Crook SO	4	1	25.00%	
Hulett PD				
Moorcroft PD				
WHP	2	1	50.00%	0.060
Other	1			

**Meth, Drugs & Public Intoxication**

County Department	Total Offenses	Meth Involved	Marijuana Involved	Drugs Involved	Public Intox.	Pub. Intox. Ave. BAC
Crook County	71	1	19	22	2	
Crook SO	35		11	13		
Hulett PD	1					
Moorcroft PD	11					
WHP	20	1	8	9		
Other	4				2	

**DUI Arrests**

County Department	Total Offenses	DUI Offenses	% DUI Of Total	Ave. BAC	DUI Involving Drugs	% DUI involving Drugs
Crook County	71	32	45.07%	0.163	5	15.63%
Crook SO	35	12	34.29%	0.165	2	16.67%
Hulett PD	1					
Moorcroft PD	11	6	54.55%	0.198		
WHP	20	12	60.00%	0.158	3	25.00%
Other	4	2	50.00%	0.065		

**Traffic Crashes**

County Department	Traffic Crashes	Alcohol Involved	% Alcohol Involved	Ave. BAC	Drugs Involved	% Drugs Involved
Crook County	3	2	66.67%	0.225		
Crook SO	2	1	50.00%	0.200		
Hulett PD						
Moorcroft PD	1	1	100.00%	0.250		
WHP						
Other						

**Underage DUI Arrests**

County Department	DUI Offenses	Underage Offenses	% DUI Of Total	Ave. BAC	DUI Involving Drugs	% DUI involving Drugs
Crook County	32	3	9.38%	0.067	1	33.33%
Crook SO	12					
Hulett PD						
Moorcroft PD	6					
WHP	12	2	16.67%	0.070	1	50.00%
Other	2	1	50.00%	0.060		

**Warrant Arrests\***

County Department	Warrant Arrests
Crook County	35
Crook SO	25
Moorcroft PD	2
Other	2
WHP	6

\*Independent Statistic

**Crook County Arrests**  
January 1, 2022 - December 31, 2022

**Total Offenses**

County Department	Total Offenses	Number Involving Alcohol	Percent Involving Alcohol	Number Involving Drugs	Percent Involving Drugs
Crook County	71	41	57.75%	22	30.99%
Crook SO	35	15	42.86%	13	37.14%
Hulett PD	1				
Moorcroft PD	11	11	100.00%		
WHP	20	11	55.00%	9	45.00%
Other	4	4	100.00%		

**Domestic Violence**

County Department	Domestic Violence Offenses	Number Involving Alcohol	Percent Involving Alcohol	Number Involving Drugs	Percent Involving Drugs
Crook County	4	2	50.00%	1	25.00%
Crook SO	3	2	66.67%	1	33.33%
Hulett PD					
Moorcroft PD					
WHP	1				
Other					

**Felony Offenses**

County Department	Felony Offenses	Number Involving Alcohol	Percent Involving Alcohol	Number Involving Drugs	Percent Involving Drugs
Crook County	11	1	9.09%	8	72.73%
Crook SO	5	1	20.00%	2	40.00%
Hulett PD					
Moorcroft PD					
WHP	6			6	100.00%
Other					

**Resisting Arrests**

County Department	Resisting Arrest Offenses	Number Involving Alcohol	Percent Involving Alcohol	Number Involving Drugs	Percent Involving Drugs
Crook County	2	1	50.00%		
Crook SO					
Hulett PD	1				
Moorcroft PD					
WHP					
Other	1	1	100.00%		

**Misdemeanor Offenses**

County Department	Misdemeanor Offenses	Number Involving Alcohol	Percent Involving Alcohol	Number Involving Drugs	Percent Involving Drugs
Crook County	61	41	67.21%	15	24.59%
Crook SO	30	15	50.00%	11	36.67%
Hulett PD	1				
Moorcroft PD	11	11	100.00%		
WHP	15	11	73.33%	4	26.67%
Other	4	4	100.00%		

**Assault**

County Department	Assault Offenses	Number Involving Alcohol	Percent Involving Alcohol	Number Involving Drugs	Percent Involving Drugs
Crook County	1	1	100.00%		
Crook SO					
Hulett PD					
Moorcroft PD	1	1	100.00%		
WHP					
Other					

**Crook County Arrests**  
**January 1, 2022 - December 31, 2022**

County Department	Location of Consumption							Point of Sale				
	Alcohol Involved	Home	Bar	Private Party	Public Event	Vehicle	No Response	Home	Retail Liquor	Private Party	Public Event	No Response
Crook County	41	14	23	3	1	7	12		10	9	2	
Crook SO	15	11	14			2	5		3	3		
Hulett PD												
Moorcroft PD	11		3		1	2	3		3	2	1	
WHP	11	2	5	2		3	3		4	3	1	
Other	4	1	1	1			1			1		

Bar Name	Crook Co SO	Moorcroft PD	WHP	Total
DEERE HAVEN	1	1		2
DEVILS TOWER GOLF CLUB			1	1
DEWEYS PLACE		1	1	2
LONGHORN SALOON & GRILL			1	1
SAND CREEK TRADING POST	1			1
SUNDANCE COUNTRY CLUB	1			1
<b>Total</b>	<b>3</b>	<b>2</b>	<b>3</b>	<b>8</b>

\*Total of percents in Location of Consumption and Point of Sale categories may exceed 100% due to single arrests involving more than one location or point of sale.

No public events named in alcohol collection reports.

**Fremont County**  
**January 1, 2022 - December 31, 2022**

**Numbers by Department**

County Department	Total Offenses	Misde-meanor	Felony	Domestic Violence	Resist Arrest	Assault	Public Intox	Alcohol Involved	Drugs Involved	Traffic Crash	Female	Male	Average Age
Fremont County	1194	1147	81	87	63	42	430	875	206	19	353	841	35.68
Fremont SO	127	124	6	16	2	5	7	68	30	6	42	85	35.21
Lander PD	259	253	7	20	8	12	118	186	35	5	69	190	36.84
Riverton PD	748	714	64	49	50	25	305	586	124		224	524	35.18
Shoshoni PD	13	13		1				8	2	2	3	10	39.69
WHP	42	40	2		2			26	15	6	15	27	36.17
Other	5	3	2	1	1			1				5	49.00

\*VADC Not included in county or statewide totals

**Percents by Department\***

County Department	Total Offenses	Misde-meanor	Felony	Domestic Violence	Resist Arrest	Assault	Public Intox	Alcohol Involved	Drugs Involved	Traffic Crash	Female	Male
Fremont County	1194	96.06%	6.78%	7.29%	5.28%	3.52%	36.01%	73.28%	17.25%	1.59%	29.56%	70.44%
Fremont SO	127	97.64%	4.72%	12.60%	1.57%	3.94%	5.51%	53.54%	23.62%	4.72%	33.07%	66.93%
Lander PD	259	97.68%	2.70%	7.72%	3.09%	4.63%	45.56%	71.81%	13.51%	1.93%	26.64%	73.36%
Riverton PD	748	95.45%	8.56%	6.55%	6.68%	3.34%	40.78%	78.34%	16.58%		29.95%	70.05%
Shoshoni PD	13	100.00%		7.69%				61.54%	15.38%	15.38%	23.08%	76.92%
WHP	42	95.24%	4.76%		4.76%			61.90%	35.71%	14.29%	35.71%	64.29%
Other	5	60.00%	40.00%	20.00%	20.00%			20.00%				100.00%

\*VADC Not included in county or statewide totals

\*Total percents may not equal 100 due to lack of information, or a single arrest involving multiple crimes.

**Fremont County**  
**January 1, 2022 - December 31, 2022**

**MIP Arrests**

County Department	Total Underage Offenses	MIP Arrests	% MIP of Total	Average MIP BAC
Fremont County	132	69	52.27%	0.138
Fremont SO	8			
Lander PD	13	6	46.15%	0.135
Riverton PD	108	63	58.33%	0.138
Shoshoni PD	1			
WHP	2			
Other				

**Meth, Drugs & Public Intoxication**

County Department	Total Offenses	Meth Involved	Marijuana Involved	Drugs Involved	Public Intox.	Pub. Intox. Ave. BAC
Fremont County	1194	112	73	206	430	0.241
Fremont SO	127	16	10	30	7	0.240
Lander PD	259	18	16	35	118	0.248
Riverton PD	748	70	41	124	305	0.238
Shoshoni PD	13	1		2		
WHP	42	7	6	15		
Other	5					

**DUI Arrests**

County Department	Total Offenses	DUI Offenses	% DUI Of Total	Ave. BAC	DUI Involving Drugs	% DUI involving Drugs
Fremont County	1194	246	20.60%	0.171	47	19.11%
Fremont SO	127	42	33.07%	0.183	8	19.05%
Lander PD	259	56	21.62%	0.171	12	21.43%
Riverton PD	748	112	14.97%	0.154	19	16.96%
Shoshoni PD	13	6	46.15%	0.120	1	16.67%
WHP	42	30	71.43%	0.194	7	23.33%
Other	5					

**Traffic Crashes**

County Department	Traffic Crashes	Alcohol Involved	% Alcohol Involved	Ave. BAC	Drugs Involved	% Drugs Involved
Fremont County	19	16	84.21%	0.148	3	15.79%
Fremont SO	6	6	100.00%	0.150	1	16.67%
Lander PD	5	4	80.00%	0.110	1	20.00%
Riverton PD						
Shoshoni PD	2	1	50.00%			
WHP	6	5	83.33%	0.173	1	16.67%
Other						

**Underage DUI Arrests**

County Department	DUI Offenses	Underage Offenses	% DUI Of Total	Ave. BAC	DUI Involving Drugs	% DUI involving Drugs
Fremont County	246	23	9.35%	0.094	5	21.74%
Fremont SO	42	1	2.38%		1	100.00%
Lander PD	56	4	7.14%	0.110		
Riverton PD	112	17	15.18%	0.088	4	23.53%
Shoshoni PD	6					
WHP	30	1	3.33%			
Other						

**Warrant Arrests\***

County Department	Warrant Arrests
Fremont County	968
Fremont SO	171
Lander PD	141
Riverton PD	602
Shoshoni PD	8
WHP	39
Other	7

\*Independent Statistic

**Fremont County**  
**January 1, 2022 - December 31, 2022**

**Total Offenses**

County Department	Total Offenses	Number Involving Alcohol	Percent Involving Alcohol	Number Involving Drugs	Percent Involving Drugs
Fremont County	1194	875	73.28%	206	17.25%
Fremont SO	127	68	53.54%	30	23.62%
Lander PD	259	186	71.81%	35	13.51%
Riverton PD	748	586	78.34%	124	16.58%
Shoshoni PD	13	8	61.54%	2	15.38%
WHP	42	26	61.90%	15	35.71%
Other	5	1	20.00%		

**Domestic Violence**

County Department	Domestic Violence Offenses	Number Involving Alcohol	Percent Involving Alcohol	Number Involving Drugs	Percent Involving Drugs
Fremont County	87	62	71.26%	6	6.90%
Fremont SO	16	10	62.50%	1	6.25%
Lander PD	20	12	60.00%	2	10.00%
Riverton PD	49	39	79.59%	2	4.08%
Shoshoni PD	1			1	100.00%
WHP					
Other	1	1	100.00%		

**Felony Offenses**

County Department	Felony Offenses	Number Involving Alcohol	Percent Involving Alcohol	Number Involving Drugs	Percent Involving Drugs
Fremont County	81	25	30.86%	33	40.74%
Fremont SO	6			4	66.67%
Lander PD	7	5	71.43%	1	14.29%
Riverton PD	64	20	31.25%	26	40.63%
Shoshoni PD					
WHP	2			2	100.00%
Other	2				

**Resisting Arrests**

County Department	Resisting Arrest Offenses	Number Involving Alcohol	Percent Involving Alcohol	Number Involving Drugs	Percent Involving Drugs
Fremont County	63	40	63.49%	15	23.81%
Fremont SO	2	1	50.00%		
Lander PD	8	5	62.50%	3	37.50%
Riverton PD	50	33	66.00%	10	20.00%
Shoshoni PD					
WHP	2	1	50.00%	2	100.00%
Other	1				

**Misdemeanor Offenses**

County Department	Misdemeanor Offenses	Number Involving Alcohol	Percent Involving Alcohol	Number Involving Drugs	Percent Involving Drugs
Fremont County	1147	861	75.07%	193	16.83%
Fremont SO	124	68	54.84%	29	23.39%
Lander PD	253	182	71.94%	34	13.44%
Riverton PD	714	576	80.67%	115	16.11%
Shoshoni PD	13	8	61.54%	2	15.38%
WHP	40	26	65.00%	13	32.50%
Other	3	1	33.33%		

**Assault**

County Department	Assault Offenses	Number Involving Alcohol	Percent Involving Alcohol	Number Involving Drugs	Percent Involving Drugs
Fremont County	42	30	71.43%	5	11.90%
Fremont SO	5	4	80.00%	1	20.00%
Lander PD	12	8	66.67%	1	8.33%
Riverton PD	25	18	72.00%	3	12.00%
Shoshoni PD					
WHP					
Other					

**Fremont County**  
**January 1, 2022 - December 31, 2022**

County Department	Location of Consumption							Point of Sale				
	Alcohol Involved	Home	Bar	Private Party	Public Event	Vehicle	No Response	Home	Retail Liquor	Private Party	Public Event	No Response
Fremont County	875	51	89	8	3	33	759	5	24	27		63
Fremont SO	68	23	32	3		10	17	1	7	9		1
Lander PD	186	18	41	5	3	5	55	1	11	9		3
Riverton PD	586	4	8				685	3	4	7		59
Shoshoni PD	8	2	3			3						
WHP	26	3	4			15	2		2	2		
Other	1	1	1									

\*VADC Not included in county or statewide totals

Bar Name	Fremont SO	Lander PD	Riverton PD	Shoshoni PD	WHP	Total
	B & K SHORELINE STOP				1	
BOMBERS SPORTS BAR			2			2
COWFISH	1					1
ENDZONE BAR & GRILL	2	3				5
FREEDOM LIQUORS	1					1
GANNETT GRILL & LANDER BAR	1	7				8
MAVERICK MOTEL RESTAURANT & LOUNGE		5				5
OTHER		1	1			2
RALFFS			1			1
RIVER CITY BAR	1				1	2
ROCKY MOUNTAIN DISCOUNT LIQUOR	1					1
RUSTIC PINE TAVERN	1					1
SILVER SPUR LANES		1				1
SVILARS		1				1
TONYS PIZZA	1					1
<b>Total</b>	<b>9</b>	<b>18</b>	<b>4</b>	<b>1</b>	<b>1</b>	<b>33</b>

\*Total of percents in Location of Consumption and Point of Sale categories may exceed 100% due to single arrests involving more than one location or point of sale.

No public events named in alcohol collection reports.

**Goshen County Arrests**  
**January 1, 2022 - December 31, 2022**

**Numbers by Department**

County Department	Total Offenses	Misde-meanor	Felony	Domestic Violence	Resist Arrest	Assault	Public Intox	Alcohol Involved	Drugs Involved	Traffic Crash	Female	Male	Average Age
Goshen County	121	112	12	12		3	21	65	22	8	36	85	35.29
Goshen County SO	15	15	1	1		2		9	2		5	10	38.07
Torrington PD	106	97	11	11		1	21	56	20	8	31	75	34.90

**Percents by Department\***

County Department	Total Offenses	Misde-meanor	Felony	Domestic Violence	Resist Arrest	Assault	Public Intox	Alcohol Involved	Drugs Involved	Traffic Crash	Female	Male
Goshen County	121	92.56%	9.92%	9.92%		2.48%	17.36%	53.72%	18.18%	6.61%	29.75%	70.25%
Goshen County SO	15	100.00%	6.67%	6.67%		13.33%		60.00%	13.33%		33.33%	66.67%
Torrington PD	106	91.51%	10.38%	10.38%		0.94%	19.81%	52.83%	18.87%	7.55%	29.25%	70.75%

\*Total percents may not equal 100 due to lack of information, or single arrests involving multiple crimes.



**Goshen County Arrests**  
**January 1, 2022 - December 31, 2022**

**MIP Arrests**

County Department	Total		% MIP of Total	Average MIP BAC
	Underage Offenses	MIP Arrests		
Goshen County	16			
Goshen County SO	2			
Torrington PD	14			

**Meth, Drugs & Public Intoxication**

County Department	Total Offenses	Meth Involved	Marijuana Involved	Drugs Involved	Public Intox.	Pub. Intox. Ave. BAC
Goshen County SO	15	1	1	2		
Torrington PD	106	7	15	20	21	0.187

**DUI Arrests**

County Department	Total Offenses	DUI Offenses	% DUI Of Total	Ave. BAC	DUI Involving Drugs	% DUI involving Drugs
Goshen County SO	15	8	53.33%	0.199	1	12.50%
Torrington PD	106	26	24.53%	0.188	3	11.54%

**Traffic Crashes**

County Department	Traffic Crashes	Alcohol Involved	% Alcohol Involved	Ave. BAC	Drugs Involved	% Drugs Involved
Goshen County SO						
Torrington PD	8	7	87.50%	0.222	1	12.50%

**Underage DUI Arrests**

County Department	DUI Offenses	Underage Offenses	% DUI Of Total	Ave. BAC	DUI Involving Drugs	% DUI involving Drugs
Goshen County SO	8	1	12.50%			
Torrington PD	26					

**Warrant Arrests\***

County Department	Warrant Arrests
Goshen County	82
Goshen County SO	8
Torrington PD	74

\*Independent Statistic

**Goshen County Arrests  
January 1, 2022 - December 31, 2022**

**Total Offenses**

County Department	Total Offenses	Number Involving Alcohol	Percent Involving Alcohol	Number Involving Drugs	Percent Involving Drugs
Goshen County	121	65	53.72%	22	18.18%
Goshen County SO	15	9	60.00%	2	13.33%
Torrington PD	106	56	52.83%	20	18.87%

**Felony Offenses**

County Department	Felony Offenses	Number Involving Alcohol	Percent Involving Alcohol	Number Involving Drugs	Percent Involving Drugs
Goshen County	12			7	58.33%
Goshen County SO	1				
Torrington PD	11			7	63.64%

**Misdemeanor Offenses**

County Department	Misdemeanor Offenses	Number Involving Alcohol	Percent Involving Alcohol	Number Involving Drugs	Percent Involving Drugs
Goshen County	112	65	58.04%	16	14.29%
Goshen County SO	15	9	60.00%	2	13.33%
Torrington PD	97	56	57.73%	14	14.43%

**Domestic Violence**

County Department	Domestic Violence Offenses	Number Involving Alcohol	Percent Involving Alcohol	Number Involving Drugs	Percent Involving Drugs
Goshen County	12	5	41.67%	1	8.33%
Goshen County SO	1	1	100.00%		
Torrington PD	11	4	36.36%	1	9.09%

**Resisting Arrests**

County Department	Resisting Arrest Offenses	Number Involving Alcohol	Percent Involving Alcohol	Number Involving Drugs	Percent Involving Drugs
Goshen County					
Goshen County SO					
Torrington PD					

**Assault**

County Department	Assault Offenses	Number Involving Alcohol	Percent Involving Alcohol	Number Involving Drugs	Percent Involving Drugs
Goshen County	3	1	33.33%		
Goshen County SO	2				
Torrington PD	1	1	100.00%		

**Goshen County Arrests  
January 1, 2022 - December 31, 2022**

County Department	Location of Consumption							Point of Sale				
	Alcohol Involved	Home	Bar	Private Party	Public Event	Vehicle	No Response	Home	Retail Liquor	Private Party	Public Event	No Response
Goshen County	65	10	24	2	1	3	46		14	14	1	6
Goshen County SO	9	2	4	1			4		2	2		1
Torrington PD	56	8	20	1	1	3	42		12	12	1	5

Bar Name	Goshen Co. SO	Torrington PD	Total
307 SPORTS BAR & GRILL		1	1
AMERICAN LEGION	1		1
BRONCO BAR		8	8
LA FAMILA PRADO		1	1
MINT BAR	1	2	3
<b>Total</b>	<b>2</b>	<b>12</b>	<b>14</b>

\*Total of percents in Location of Consumption and Point of Sale categories may exceed 100% due to single arrests involving more than one location or point of sale.

No public events named in alcohol collection reports.

**Hot Springs County Arrests  
January 1, 2022 - December 31, 2022**

**Numbers by Department**

County Department	Total Offenses	Misde-meanor	Felony	Domestic Violence	Resist Arrest	Assault	Public Intox	Alcohol Involved	Drugs Involved	Traffic Crash	Female	Male	Average Age
Hot Springs Co.	182	174	20	11	5	2	19	102	56	5	65	117	39.60
Hot Springs SO	36	30	7	3	1			22	8	3	10	26	42.64
Thermopolis PD	129	127	13	8	4	2	19	70	39	1	49	80	39.16
WHP	17	17						10	9	1	6	11	36.47

**Percents by Department\***

County Department	Total Offenses	Misde-meanor	Felony	Domestic Violence	Resist Arrest	Assault	Public Intox	Alcohol Involved	Drugs Involved	Traffic Crash	Female	Male
Hot Springs Co.	182	95.60%	10.99%	6.04%	2.75%	1.10%	10.44%	56.04%	30.77%	2.75%	35.71%	64.29%
Hot Springs SO	36	83.33%	19.44%	8.33%	2.78%			61.11%	22.22%	8.33%	27.78%	72.22%
Thermopolis PD	129	98.45%	10.08%	6.20%	3.10%	1.55%	14.73%	54.26%	30.23%	0.78%	37.98%	62.02%
WHP	17	100.00%						58.82%	52.94%	5.88%	35.29%	64.71%

\*Total percents may not equal 100 due to lack of information, or single arrests involving multiple crimes.

**Hot Springs County Arrests**  
January 1, 2022 - December 31, 2022

**MIP Arrests**

County Department	Total Underage Offenses	MIP Arrests	% MIP of Total	Average MIP BAC
Hot Springs Co.	15	4	26.67%	0.130
Hot Springs SO	3	1	33.33%	
Thermopolis PD	12	3	25.00%	0.130
WHP				

**Meth, Drugs & Public Intoxication**

County Department	Total Offenses	Meth Involved	Marijuana Involved	Drugs Involved	Public Intox.	Pub. Intox. Ave. BAC
Hot Springs Co.	182	28	23	56	19	0.349
Hot Springs SO	36	5		8		
Thermopolis PD	129	22	19	39	19	0.349
WHP	17	1	4	9		

**DUI Arrests**

County Department	Total Offenses	DUI Offenses	% DUI Of Total	Ave. BAC	DUI Involving Drugs	% DUI involving Drugs
Hot Springs Co.	182	57	31.32%	0.169	12	21.05%
Hot Springs SO	36	12	33.33%	0.188	1	8.33%
Thermopolis PD	129	33	25.58%	0.164	7	21.21%
WHP	17	12	70.59%	0.166	4	33.33%

**Traffic Crashes**

County Department	Traffic Crashes	Alcohol Involved	% Alcohol Involved	Ave. BAC	Drugs Involved	% Drugs Involved
Hot Springs Co.	5	5	100.00%	0.190	1	20.00%
Hot Springs SO	3	3	100.00%	0.180	1	33.33%
Thermopolis PD	1	1	100.00%	0.140		
WHP	1	1	100.00%	0.250		

**Underage DUI Arrests**

County Department	DUI Offenses	Underage Offenses	% DUI Of Total	Ave. BAC	DUI Involving Drugs	% DUI involving Drugs
Hot Springs Co.	57	1	1.75%		1	100.00%
Hot Springs SO	12					
Thermopolis PD	33	1	3.03%		1	100.00%
WHP	12					

**Warrant Arrests\***

County Department	Warrant Arrests
Hot Springs Co.	50
Hot Springs SO	19
Thermopolis PD	26
WHP	5

**Hot Springs County Arrests**  
January 1, 2022 - December 31, 2022

**Total Offenses**

County Department	Total Offenses	Number Involving Alcohol	Percent Involving Alcohol	Number Involving Drugs	Percent Involving Drugs
Hot Springs Co.	182	102	56.04%	56	30.77%
Hot Springs SO	36	22	61.11%	8	22.22%
Thermopolis PD	129	70	54.26%	39	30.23%
WHP	17	10	58.82%	9	52.94%

**Felony Offenses**

County Department	Felony Offenses	Number Involving Alcohol	Percent Involving Alcohol	Number Involving Drugs	Percent Involving Drugs
Hot Springs Co.	20	6	30.00%	12	60.00%
Hot Springs SO	7	3	42.86%	4	57.14%
Thermopolis PD	13	3	23.08%	8	61.54%
WHP					

**Misdemeanor Offenses**

County Department	Misdemeanor Offenses	Number Involving Alcohol	Percent Involving Alcohol	Number Involving Drugs	Percent Involving Drugs
Hot Springs Co.	174	98	56.32%	52	29.89%
Hot Springs SO	30	19	63.33%	5	16.67%
Thermopolis PD	127	69	54.33%	38	29.92%
WHP	17	10	58.82%	9	52.94%

**Domestic Violence**

County Department	Domestic Violence Offenses	Number Involving Alcohol	Percent Involving Alcohol	Number Involving Drugs	Percent Involving Drugs
Hot Springs Co.	11	3	27.27%	1	9.09%
Hot Springs SO	3				
Thermopolis PD	8	3	37.50%	1	12.50%
WHP					

**Resisting Arrests**

County Department	Resisting Arrest Offenses	Number Involving Alcohol	Percent Involving Alcohol	Number Involving Drugs	Percent Involving Drugs
Hot Springs Co.	5	3	60.00%		
Hot Springs SO	1				
Thermopolis PD	4	3	75.00%		
WHP					

**Assault**

County Department	Assault Offenses	Number Involving Alcohol	Percent Involving Alcohol	Number Involving Drugs	Percent Involving Drugs
Hot Springs Co.	2	1	50.00%		
Hot Springs SO					
Thermopolis PD	2	1	50.00%		
WHP					

**Hot Springs County Arrests  
January 1, 2022 - December 31, 2022**

County Department	Location of Consumption							Point of Sale				
	Alcohol Involved	Home	Bar	Private Party	Public Event	Vehicle	No Response	Home	Retail Liquor	Private Party	Public Event	No Response
Hot Springs Co.	102	38	69	1	1	14	43		25	28	1	14
Hot Springs SO	22	10	17			3	6		8	9		4
Thermopolis PD	70	27	50	1		5	31		16	18		10
WHP	10	1	2		1	6	6		1	1	1	

Bar Name	Hot Springs Co SO	Thermopolis PD	WHP	Total
LOS CABOS	1			1
ONE EYED BUFFALO BREWING	3	13	1	17
OTHER		2		2
SAFARI CLUB LOUNGE		4		4
SHORTY'S LIQUOR STORE	3	3		6
<b>Total</b>	<b>7</b>	<b>22</b>	<b>1</b>	<b>30</b>

\*Total of percents in Location of Consumption and Point of Sale categories may exceed 100% due to single arrests involving more than one location or point of sale.

No public events named in alcohol collection reports.

**Johnson County Arrests**  
**January 1, 2022 - December 31, 2022**

**Numbers by Department**

County Department	Total Offenses	Misde-meanor	Felony	Domestic Violence	Resist Arrest	Assault	Public Intox	Alcohol Involved	Drugs Involved	Traffic Crash	Female	Male	Average Age
Johnson County	121	111	18	9		3	11	80	29	8	31	90	40.57
Buffalo PD	64	57	11	9		3	9	46	9	3	16	48	41.17
Johnson SO	43	42	5				1	22	18	3	12	31	38.63
WHP	14	12	2				1	12	2	2	3	11	43.79

County Department	Total Offenses	Misde-meanor	Felony	Domestic Violence	Resist Arrest	Assault	Public Intox	Alcohol Involved	Drugs Involved	Traffic Crash	Female	Male
Johnson County	121	91.74%	14.88%	7.44%		2.48%	9.09%	66.12%	23.97%	6.61%	25.62%	74.38%
Buffalo PD	64	89.06%	17.19%	14.06%		4.69%	14.06%	71.88%	14.06%	4.69%	25.00%	75.00%
Johnson SO	43	97.67%	11.63%				2.33%	51.16%	41.86%	6.98%	27.91%	72.09%
WHP	14	85.71%	14.29%				7.14%	85.71%	14.29%	14.29%	21.43%	78.57%

\*Total percents may not equal 100 due to lack of information, or single arrests involving multiple crimes.



**Johnson County Arrests**  
January 1, 2022 - December 31, 2022

**MIP Arrests**

County Department	Total Underage Offenses	MIP Arrests	% MIP of Total	Average MIP BAC
Johnson County	4	3	75.00%	0.170
Buffalo PD	3	2	66.67%	0.170
Johnson SO	1	1	100.00%	
WHP				

**Meth, Drugs & Public Intoxication**

County Department	Total Offenses	Meth Involved	Marijuana Involved	Drugs Involved	Public Intox.	Pub. Intox. Ave. BAC
Johnson County	121	16	16	29	11	0.255
Buffalo PD	64	6	4	9	9	0.260
Johnson SO	43	9	11	18	1	0.240
WHP	14	1	1	2	1	

**DUI Arrests**

County Department	Total Offenses	DUI Offenses	% DUI Of Total	Ave. BAC	DUI Involving Drugs	% DUI involving Drugs
Johnson County	121	56	46.28%	0.165	8	14.29%
Buffalo PD	64	24	37.50%	0.196	2	8.33%
Johnson SO	43	21	48.84%	0.138	5	23.81%
WHP	14	11	78.57%	0.149	1	9.09%

**Traffic Crashes**

County Department	Traffic Crashes	Alcohol Involved	% Alcohol Involved	Ave. BAC	Drugs Involved	% Drugs Involved
Johnson County	8	8	100.00%	0.177	1	12.50%
Buffalo PD	3	3	100.00%	0.233		
Johnson SO	3	3	100.00%	0.120		
WHP	2	2	100.00%	0.150	1	50.00%

**Underage DUI Arrests**

County Department	DUI Offenses	Underage Offenses	% DUI Of Total	Ave. BAC	DUI Involving Drugs	% DUI involving Drugs
Johnson County	56	1	1.79%	0.170		
Buffalo PD	24	1	4.17%	0.170		
Johnson SO	21					
WHP	11					

**Warrant Arrests\***

County Department	Warrant Arrests
Johnson County	55
Buffalo PD	14
Johnson SO	36
WHP	5

\*Independent Statistic

**Johnson County Arrests**  
January 1, 2022 - December 31, 2022

**Total Offenses**

County Department	Total Offenses	Number Involving Alcohol	Percent Involving Alcohol	Number Involving Drugs	Percent Involving Drugs
Johnson County	121	80	66.12%	29	23.97%
Buffalo PD	64	46	71.88%	9	14.06%
Johnson SO	43	22	51.16%	18	41.86%
WHP	14	12	85.71%	2	14.29%

**Felony Offenses**

County Department	Felony Offenses	Number Involving Alcohol	Percent Involving Alcohol	Number Involving Drugs	Percent Involving Drugs
Johnson County	18	5	27.78%	9	50.00%
Buffalo PD	11	5	45.45%	4	36.36%
Johnson SO	5			4	80.00%
WHP	2			1	50.00%

**Misdemeanor Offenses**

County Department	Misdemeanor Offenses	Number Involving Alcohol	Percent Involving Alcohol	Number Involving Drugs	Percent Involving Drugs
Johnson County	111	78	70.27%	24	21.62%
Buffalo PD	57	44	77.19%	6	10.53%
Johnson SO	42	22	52.38%	17	40.48%
WHP	12	12	100.00%	1	8.33%

**Domestic Violence**

County Department	Domestic Violence Offenses	Number Involving Alcohol	Percent Involving Alcohol	Number Involving Drugs	Percent Involving Drugs
Johnson County	9	7	77.78%	1	11.11%
Buffalo PD	9	7	77.78%	1	11.11%
Johnson SO					
WHP					

**Resisting Arrests**

County Department	Resisting Arrest Offenses	Number Involving Alcohol	Percent Involving Alcohol	Number Involving Drugs	Percent Involving Drugs
Johnson County					
Buffalo PD					
Johnson SO					
WHP					

**Assault**

County Department	Assault Offenses	Number Involving Alcohol	Percent Involving Alcohol	Number Involving Drugs	Percent Involving Drugs
Johnson County	3	2	66.67%		
Buffalo PD	3	2	66.67%		
Johnson SO					
WHP					

**Johnson County Arrests**  
**January 1, 2022 - December 31, 2022**

County Department	Location of Consumption							Point of Sale				
	Alcohol Involved	Home	Bar	Private Party	Public Event	Vehicle	No Response	Home	Retail Liquor	Private Party	Public Event	No Response
Johnson County	80	15	28	7		12	30		13	19		
Buffalo PD	46	10	18	3		7	16		8	11		
Johnson SO	22	3	7	2		2	10		4	5		
WHP	12	2	3	2		3	4		1	3		

Bar Name	Buffalo PD	Johnson Co SO	WHP	Total
CENTURY CLUB	3	1	1	5
COWBOY SALOON	1	1		2
OTHER	1			1
PARADISE GUEST RANCH		1		1
TAYLORS INVASION BAR		1		1
WAHOO LIKKERS OUTBACK LOUNGE	3			3
<b>Total</b>	<b>8</b>	<b>4</b>	<b>1</b>	<b>13</b>

\*Total of percents in Location of Consumption and Point of Sale categories may exceed 100% due to single arrests involving more than one location or point of sale.

No public events named in alcohol collection reports.

**Lincoln County Arrests**  
**January 1, 2022- December 31, 2022**

**Total Offenses**

County Department	Total Offenses	Number Involving Alcohol	Percent Involving Alcohol	Number Involving Drugs	Percent Involving Drugs
Lincoln County	231	134	58.01%	59	25.54%
Afton PD	10	4	40.00%	7	70.00%
Diamondville PD	5	4	80.00%		
Kemmerer PD	45	24	53.33%	15	33.33%
LaBarge PD	4	2	50.00%		
Lincoln SO	124	68	54.84%	28	22.58%
Other	3			3	100.00%
WHP	40	32	80.00%	6	15.00%

**Felony Offenses**

County Department	Felony Offenses	Number Involving Alcohol	Percent Involving Alcohol	Number Involving Drugs	Percent Involving Drugs
Lincoln County	44	12	27.27%	19	43.18%
Afton PD	2	1	50.00%	2	100.00%
Diamondville PD	1	1	100.00%		
Kemmerer PD	7	1	14.29%	3	42.86%
LaBarge PD					
Lincoln SO	27	8	29.63%	8	29.63%
Other	2			2	100.00%
WHP	5	1	20.00%	4	80.00%

**Misdemeanor Offenses**

County Department	Misdemeanor Offenses	Number Involving Alcohol	Percent Involving Alcohol	Number Involving Drugs	Percent Involving Drugs
Lincoln County	209	127	60.77%	54	25.84%
Afton PD	10	4	40.00%	7	70.00%
Diamondville PD	4	3	75.00%		
Kemmerer PD	43	24	55.81%	14	32.56%
LaBarge PD	4	2	50.00%		
Lincoln SO	106	62	58.49%	25	23.58%
Other	3			3	100.00%
WHP	39	32	82.05%	5	12.82%

**Domestic Violence**

County Department	Domestic Violence Offenses	Number Involving Alcohol	Percent Involving Alcohol	Number Involving Drugs	Percent Involving Drugs
Lincoln County	26	13	50.00%	2	7.69%
Afton PD					
Diamondville PD	1	1	100.00%		
Kemmerer PD	3	1	33.33%		
LaBarge PD	1				
Lincoln SO	19	9	47.37%	2	10.53%
Other					
WHP	2	2	100.00%		

**Resisting Arrests**

County Department	Resisting Arrest Offenses	Number Involving Alcohol	Percent Involving Alcohol	Number Involving Drugs	Percent Involving Drugs
Lincoln County	2	1	50.00%		
Afton PD					
Diamondville PD					
Kemmerer PD	1	1	100.00%		
LaBarge PD					
Lincoln SO	1				
Other					
WHP					

**Assault**

County Department	Assault Offenses	Number Involving Alcohol	Percent Involving Alcohol	Number Involving Drugs	Percent Involving Drugs
Lincoln County	14	4	28.57%	3	21.43%
Afton PD	1	1	100.00%		
Diamondville PD	2	1	50.00%		
Kemmerer PD	2			1	50.00%
LaBarge PD	1				
Lincoln SO	8	2	25.00%	2	25.00%
Other					
WHP					

**Lincoln County Arrests**  
**January 1, 2022- December 31, 2022**

County Department	Location of Consumption							Point of Sale				
	Alcohol Involved	Home	Bar	Private Party	Public Event	Vehicle	No Response	Home	Retail Liquor	Private Party	Public Event	No Response
Lincoln County	134	24	55	4	5	19	102		39	34	4	14
Afton PD	4	1	3				5		2	2		2
Diamondville PD	4	1	1		1	1	1		1	1	1	
Kemmerer PD	24	5	9		1	2	25		6	5	1	2
LaBarge PD	2					1	1					
Lincoln SO	68	13	27	2	2	9	57		16	14	1	9
Other							3					
WHP	32	4	15	2	1	6	10		14	12	1	1

Bar Name	Kemmerer		Lincoln		Total
	Afton PD	PD	SO	WHP	
BULL MOOSE SALOON			4	3	7
COLTERS LODGE	1		1	1	3
COWBOY BAR	1				1
DAD'S BAR AND STEAKHOUSE				2	2
MELVIN BREWING			2	3	5
PINES BAR			3		3
SAGE LANES GRILL		1	1		2
STOCK EXCHANGE CLUB		1			1
TAVERN ON THE GREYS			2	1	3
OTHER		1	1	1	3
<b>Total</b>	<b>2</b>	<b>3</b>	<b>14</b>	<b>11</b>	<b>30</b>

\*Total of percents in Location of Consumption and Point of Sale categories may exceed 100% due to single arrests involving more than one location or point of sale.

No public events named in alcohol collection reports.

**Natrona County Arrests**  
**January 1, 2022 - December 31, 2022**

**Numbers by Department**

County Department	Total Offenses	Misde-meanor	Felony	Domestic Violence	Resist Arrest	Assault	Public Intox	Alcohol Involved	Drugs Involved	Traffic Crash	Female	Male	Average Age
Natrona County	1323	1094	262	60	6	47	202	515	280	51	339	984	36.60
Casper PD	1064	879	214	45	5	45	195	439	244	39	256	808	36.98
Evansville PD	27	25	2	3	1	1	1	13	7		9	18	33.26
Mills PD	7	6	1	1			1	3			2	5	44.57
Natrona SO	221	183	42	11		1	5	59	27	12	71	150	35.02
Other	4	1	3					1	2		1	3	36.50

**Percents by Department\***

County Department	Total Offenses	Misde-meanor	Felony	Domestic Violence	Resist Arrest	Assault	Public Intox	Alcohol Involved	Drugs Involved	Traffic Crash	Female	Male
Natrona County	1323	82.69%	19.80%	4.54%	0.45%	3.55%	15.27%	38.93%	21.16%	3.85%	25.62%	74.38%
Casper PD	1064	82.61%	20.11%	4.23%	0.47%	4.23%	18.33%	41.26%	22.93%	3.67%	24.06%	75.94%
Evansville PD	27	92.59%	7.41%	11.11%	3.70%	3.70%	3.70%	48.15%	25.93%		33.33%	66.67%
Mills PD	7	85.71%	14.29%	14.29%			14.29%	42.86%			28.57%	71.43%
Natrona SO	221	82.81%	19.00%	4.98%		0.45%	2.26%	26.70%	12.22%	5.43%	32.13%	67.87%
Other	4	25.00%	75.00%					25.00%	50.00%		25.00%	75.00%

\*Total percents may not equal 100 due to lack of information, or single arrests involving multiple crimes.

**Natrona County Arrests**  
January 1, 2022 - December 31, 2022

**MIP Arrests**

County Department	Total Underage Offenses	MIP Arrests	% MIP of Total	Average MIP BAC
Natrona County	115	6	5.22%	0.160
Casper PD	84	4	4.76%	0.160
Evansville PD	3	1	33.33%	
Mills PD				
Natrona SO	28	1	3.57%	
Other				

**Meth, Drugs & Public Intoxication**

County Department	Total Offenses	Meth Involved	Marijuana Involved	Drugs Involved	Public Intox.	Pub. Intox. Ave. BAC
Natrona County	1323	146	58	280	202	0.225
Casper PD	1064	121	53	244	195	0.225
Evansville PD	27	5		7	1	
Mills PD	7				1	
Natrona SO	221	18	5	27	5	
Other	4	2		2		

**DUI Arrests**

County Department	Total Offenses	DUI Offenses	% DUI Of Total	Ave. BAC	DUI Involving Drugs	% DUI involving Drugs
Natrona County	1323	284	21.47%	0.155	42	14.79%
Casper PD	1064	208	19.55%	0.147	30	14.42%
Evansville PD	27	6	22.22%	0.160	2	33.33%
Mills PD	7	2	28.57%			
Natrona SO	221	67	30.32%	0.164	10	14.93%
Other	4	1	25.00%	0.330		

NOTE: Cheyenne PD officers have the option to cite and release persons arrested for DUI for a first offense when the arrestee's vehicle has been impounded. These arrests are not included in this report as they were not booked into the detention facility.

**Traffic Crashes**

County Department	Traffic Crashes	Alcohol Involved	% Alcohol Involved	Ave. BAC	Drugs Involved	% Drugs Involved
Natrona County	51	39	76.47%	0.163	6	11.76%
Casper PD	39	29	74.36%	0.165	6	15.38%
Evansville PD						
Mills PD						
Natrona SO	12	10	83.33%	0.150		
Other						

**Underage DUI Arrests**

County Department	DUI Offenses	Underage Offenses	% DUI Of Total	Ave. BAC	DUI Involving Drugs	% DUI involving Drugs
Natrona County	284	14	4.93%	0.132	2	14.29%
Casper PD	208	10	4.81%	0.115	1	10.00%
Evansville PD	6	2	33.33%	0.140	1	50.00%
Mills PD	2					
Natrona SO	67	2	2.99%	0.140		
Other	1					

**Warrant Arrests\***

County Department	Warrant Arrests
Natrona County	1333
Casper PD	936
Evansville PD	61
Mills PD	3
Natrona SO	330
Other	3

\*Independent Statistic

**Natrona County Arrests**  
January 1, 2022 - December 31, 2022

**Total Offenses**

County Department	Total Offenses	Number Involving Alcohol	Percent Involving Alcohol	Number Involving Drugs	Percent Involving Drugs
Natrona County	1323	515	38.93%	280	21.16%
Casper PD	1064	439	41.26%	244	22.93%
Evansville PD	27	13	48.15%	7	25.93%
Mills PD	7	3	42.86%		
Natrona SO	221	59	26.70%	27	12.22%
Other	4	1	25.00%	2	50.00%

**Domestic Violence**

County Department	Domestic Violence Offenses	Number Involving Alcohol	Percent Involving Alcohol	Number Involving Drugs	Percent Involving Drugs
Natrona County	60	21	35.00%	2	3.33%
Casper PD	45	15	33.33%	1	2.22%
Evansville PD	3	3	100.00%		
Mills PD	1	1	100.00%		
Natrona SO	11	2	18.18%	1	9.09%
Other					

**Felony Offenses**

County Department	Felony Offenses	Number Involving Alcohol	Percent Involving Alcohol	Number Involving Drugs	Percent Involving Drugs
Natrona County	262	20	7.63%	135	51.53%
Casper PD	214	16	7.48%	122	57.01%
Evansville PD	2			2	100.00%
Mills PD	1				
Natrona SO	42	4	9.52%	9	21.43%
Other	3			2	66.67%

**Resisting Arrests**

County Department	Resisting Arrest Offenses	Number Involving Alcohol	Percent Involving Alcohol	Number Involving Drugs	Percent Involving Drugs
Natrona County	6	3	50.00%	1	16.67%
Casper PD	5	2	40.00%	1	20.00%
Evansville PD	1	1	100.00%		
Mills PD					
Natrona SO					
Other					

**Misdemeanor Offenses**

County Department	Misdemeanor Offenses	Number Involving Alcohol	Percent Involving Alcohol	Number Involving Drugs	Percent Involving Drugs
Natrona County	1094	505	46.16%	164	14.99%
Casper PD	879	430	48.92%	138	15.70%
Evansville	25	13	52.00%	5	20.00%
Mills PD	6	3	50.00%		
Natrona SO	183	58	31.69%	21	11.48%
Other	1	1	100.00%		

**Assault**

County Department	Assault Offenses	Number Involving Alcohol	Percent Involving Alcohol	Number Involving Drugs	Percent Involving Drugs
Natrona County	47	3	6.38%	2	4.26%
Casper PD	45	2	4.44%	2	4.44%
Evansville PD	1	1	100.00%		
Mills PD					
Natrona SO	1				
Other					



**Natrona County Arrests**  
**January 1, 2022 - December 31, 2022**

County Department	Location of Consumption							Point of Sale				
	Alcohol Involved	Home	Bar	Private Party	Public Event	Vehicle	No Response	Home	Retail Liquor	Private Party	Public Event	No Response
Natrona County	515	95	155	8	5	19	476	4	55	58	5	69
Casper PD	439	69	107	4	3	7	392	3	35	34	2	56
Evansville PD	13	5	8	1		3	9		3	3		3
Mills PD	3	1	3						1	1		
Natrona SO	59	19	35	3	2	9	74	1	15	20	3	8
Other	1	1	2				1		1			2

Bar Name	Evansville			Natrona Co SO	Total
	Casper PD	PD	Mills PD		
307 HORSE RACING	1				1
ALIBI BAR & LOUNGE	3				3
BAYOU LIQUORS			2		2
BEACON CLUB (THE)	3			3	6
BUFFALO WILD WINGS	1				1
FORT SALOON N EATERY (THE)	2				2
GALLOWAYS IRISH PUB	1				1
GASLIGHT SOCIAL (THE)	5				5
GUADALAJARA FAMILY MEXICAN RESTAURANT	1				1
HAPPY DAYS LIQUOR	1	1		1	3
HIDEAWAY BAR & PACKAGE	1				1
HOOCHS		1			1
J'S PUB & GRILL	1				1
KEG & CORK (THE)	2				2
MOONLIGHT LIQUORS	3				3
RACKS	6	1			7
OFFICE BAR AND GRILL				10	10
WYOMING ALE WORKS	3				3
OTHER	1				1
<b>Total</b>	<b>35</b>	<b>3</b>	<b>2</b>	<b>14</b>	<b>54</b>

\*Total of percents in Location of Consumption and Point of Sale

No public events named in alcohol collection reports.

**Niobrara County Arrests**  
**January 1, 2022 - December 31, 2022**

**Numbers by Department**

County Department	Total Offenses	Misde-meanor	Felony	Domestic Violence	Resist Arrest	Assault	Public Intox	Alcohol Involved	Drugs Involved	Traffic Crash	Female	Male	Average Age
Niobrara County	2	2		1				1	1	1		2	35.00
WHP	2	2		1				1	1	1		2	35.00

**Percents by Department\***

County Department	Total Offenses	Misde-meanor	Felony	Domestic Violence	Resist Arrest	Assault	Public Intox	Alcohol Involved	Drugs Involved	Traffic Crash	Female	Male
Niobrara County	2	100.00%		50.00%				50.00%	50.00%	50.00%		100.00%
WHP	2	100.00%		50.00%				50.00%	50.00%	50.00%		100.00%

\*Total percents may not equal 100 due to lack of information, or a single arrest involving multiple crimes.

**Niobrara County Arrests**  
January 1, 2022 - December 31, 2022

**MIP Arrests**

County Department	Total Underage Offenses	MIP Arrests	% MIP of Total	Average MIP BAC
Niobrara County				
WHP				

**Meth, Drugs & Public Intoxication**

County Department	Total Offenses	Meth Involved	Marijuana Involved	Drugs Involved	Public Intox.	Pub. Intox. Ave. BAC
Niobrara County	2		1	1		
WHP	2		1	1		

**DUI Arrests**

County Department	Total Offenses	DUI Offenses	% DUI Of Total	Ave. BAC	DUI Involving Drugs	% DUI involving Drugs
Niobrara County	2	1	50.00%	0.180	1	100.00%
WHP	2	1	50.00%	0.180	1	100.00%

**Traffic Crashes**

County Department	Traffic Crashes	Alcohol Involved	% Alcohol Involved	Ave. BAC	Drugs Involved	% Drugs Involved
Niobrara County	1					
WHP	1					

**Underage DUI Arrests**

County Department	DUI Offenses	Underage Offenses	% DUI Of Total	Ave. BAC	DUI Involving Drugs	% DUI involving Drugs
Niobrara County	1					
WHP	1					

**Warrant Arrests\***

County Department	Warrant Arrests
Niobrara County	
WHP	

\*Independent Statistic

**Niobrara County Arrests**  
January 1, 2022 - December 31, 2022

**Total Offenses**

County Department	Total Offenses	Number Involving Alcohol	Percent Involving Alcohol	Number Involving Drugs	Percent Involving Drugs
Niobrara County	2	1	50.00%	1	50.00%
WHP	2	1	50.00%	1	50.00%

**Felony Offenses**

County Department	Felony Offenses	Number Involving Alcohol	Percent Involving Alcohol	Number Involving Drugs	Percent Involving Drugs
Niobrara County					
WHP					

**Misdemeanor Offenses**

County Department	Misdemeanor Offenses	Number Involving Alcohol	Percent Involving Alcohol	Number Involving Drugs	Percent Involving Drugs
Niobrara County	2	1	50.00%	1	50.00%
WHP	2	1	50.00%	1	50.00%

**Domestic Violence**

County Department	Domestic Violence Offenses	Number Involving Alcohol	Percent Involving Alcohol	Number Involving Drugs	Percent Involving Drugs
Niobrara County	1				
WHP	1				

**Resisting Arrests**

County Department	Resisting Arrest Offenses	Number Involving Alcohol	Percent Involving Alcohol	Number Involving Drugs	Percent Involving Drugs
Niobrara County					
WHP					

**Assault**

County Department	Assault Offenses	Number Involving Alcohol	Percent Involving Alcohol	Number Involving Drugs	Percent Involving Drugs
Niobrara County					
WHP					

**Niobrara County Arrests  
January 1, 2022 - December 31, 2022**

County Department	Alcohol Involved	Location of Consumption							Point of Sale					
		Home	Bar	Private Party	Public Event	Vehicle	Other	No Response	Home	Retail Liquor	Private Party	Public Event	No Response	
Niobrara County	1					1								
WHP	1					1								

Bar Name	Niobrara Co		
	SO	WHP	Total
<b>Total</b>			

\*Total of percents in Location of Consumption and Point of Sale categories may exceed 100% due to single arrests involving more than one location or point of sale.

No public events named in alcohol collection reports.

**Park County Arrests**  
**January 1, 2022 - December 31, 2022**

**Numbers by Department**

County Department	Total Offenses	Misde-meanor	Felony	Domestic Violence	Resist Arrest	Assault	Public Intox	Alcohol Involved	Drugs Involved	Traffic Crash	Female	Male	Average Age
Park County	61	58	4	2		4	7	42	11	4	11	50	38.20
Cody PD	46	43	3	2		3	5	30	6	2	10	36	39.35
Powell PD	15	15	1			1	2	12	5	2	1	14	34.67

**Percents by Department\***

County Department	Total Offenses	Misde-meanor	Felony	Domestic Violence	Resist Arrest	Assault	Public Intox	Alcohol Involved	Drugs Involved	Traffic Crash	Female	Male
Park County	61	95.08%	6.56%	3.28%		6.56%	11.48%	68.85%	18.03%	6.56%	18.03%	81.97%
Cody PD	46	93.48%	6.52%	4.35%		6.52%	10.87%	65.22%	13.04%	4.35%	21.74%	78.26%
Powell PD	15	100.00%	6.67%			6.67%	13.33%	80.00%	33.33%	13.33%	6.67%	93.33%

\*Total percents may not equal 100 due to lack of information, or single arrests involving multiple crimes.

**Park County Arrests**  
January 1, 2022 - December 31, 2022

**MIP Arrests**

County Department	Total Underage Offenses	MIP Arrests	% MIP of Total	Average MIP BAC
Park County	9	2	22.22%	0.090
Cody PD	7	1	14.29%	0.090
Powell PD	2	1	50.00%	

**Meth, Drugs & Public Intoxication**

County Department	Total Offenses	Meth Involved	Marijuana Involved	Drugs Involved	Public Intox.	Pub. Intox. Ave. BAC
Park County	61	4	7	11	7	0.175
Cody PD	46	3	3	6	5	0.175
Powell PD	15	1	4	5	2	

**DUI Arrests**

County Department	Total Offenses	DUI Offenses	% DUI Of Total	Ave. BAC	DUI Involving Drugs	% DUI involving Drugs
Park County	61	25	40.98%	0.178	2	8.00%
Cody PD	46	19	41.30%	0.173	1	5.26%
Powell PD	15	6	40.00%	0.192	1	16.67%

**Traffic Crashes**

County Department	Traffic Crashes	Alcohol Involved	% Alcohol Involved	Ave. BAC	Drugs Involved	% Drugs Involved
Park County	4	3	75.00%	0.237		
Cody PD	2	1	50.00%	0.270		
Powell PD	2	2	100.00%	0.22		

**Underage DUI Arrests**

County Department	DUI Offenses	Underage Offenses	% DUI Of Total	Ave. BAC	DUI Involving Drugs	% DUI involving Drugs
Park County	25	1	4.00%	0.080		
Cody PD	19					
Powell PD	6	1	16.67%	0.080		

**Warrant Arrests\***

County Department	Warrant Arrests
Park County	11
Cody PD	9
Powell PD	2

\*Independent Statistic

**Park County Arrests**  
**January 1, 2022 - December 31, 2022**

**Total Offenses**

County Department	Total Offenses	Number Involving Alcohol	Percent Involving Alcohol	Number Involving Drugs	Percent Involving Drugs
Park County	61	42	68.85%	11	18.03%
Cody PD	46	30	65.22%	6	13.04%
Powell PD	15	12	80.00%	5	33.33%

**Felony Offenses**

County Department	Felony Offenses	Number Involving Alcohol	Percent Involving Alcohol	Number Involving Drugs	Percent Involving Drugs
Park County	4	1	25.00%	1	25.00%
Cody PD	3				
Powell PD	1	1	100.00%	1	100.00%

**Misdemeanor Offenses**

County Department	Misdemeanor Offenses	Number Involving Alcohol	Percent Involving Alcohol	Number Involving Drugs	Percent Involving Drugs
Park County	58	42	72.41%	11	18.97%
Cody PD	43	30	69.77%	6	13.95%
Powell PD	15	12	80.00%	5	33.33%

**Domestic Violence**

County Department	Domestic Violence Offenses	Number Involving Alcohol	Percent Involving Alcohol	Number Involving Drugs	Percent Involving Drugs
Park County	2	1	50.00%		
Cody PD	2	1	50.00%		
Powell PD					

**Resisting Arrests**

County Department	Resisting Arrest Offenses	Number Involving Alcohol	Percent Involving Alcohol	Number Involving Drugs	Percent Involving Drugs
Park County					
Cody PD					
Powell PD					

**Assault**

County Department	Assault Offenses	Number Involving Alcohol	Percent Involving Alcohol	Number Involving Drugs	Percent Involving Drugs
Park County	4	2	50.00%	1	25.00%
Cody PD	3	1	33.33%		
Powell PD	1	1	100.00%	1	100.00%



**Park County Arrests**  
**January 1, 2022 - December 31, 2022**

County Department	Alcohol Involved	Location of Consumption						No Response	Point of Sale				
		Home	Bar	Private Party	Public Event	Vehicle	Other		Home	Retail Liquor	Private Party	Public Event	No Response
Park County	42	15	26	1		3	14		16	13			
Cody PD	30	9	19			1	13		10	10			
Powell PD	12	6	7	1		2	1		6	3			

Bar Name	Cody PD	Powell PD	Total
3 H LIQUORS	1		1
CODY ELKS CLUB	1		1
IRMA HOTEL	4		4
K BAR SALOON		1	1
SILVER DOLLAR BAR	3		3
TRAILHEAD ITALIAN AND WOOD FIRED PIZZA	1		1
<b>Total</b>	<b>10</b>	<b>1</b>	<b>11</b>

\*Total of percents in Location of Consumption and Point of Sale categories may exceed 100% due to single arrests involving more than one location or point of sale.

No public events named in alcohol collection reports.

**Platte County Arrests  
January 1, 2022 - December 31, 2022**

**Numbers by Department**

County Department	Total Offenses	Misde-meanor	Felony	Domestic Violence	Resist Arrest	Assault	Public Intox	Alcohol Involved	Drugs Involved	Traffic Crash	Female	Male	Average Age
Platte County	162	152	40	12		12		67	42	5	25	137	38.31
Guernsey PD	14	12	3	3				5		1	2	12	42.00
Other	1		1									1	46.00
Platte SO	56	55	7	6		3		30	15	2	7	49	39.09
Wheatland PD	62	58	24	3		9		21	14	2	12	50	38.15
WHP	29	27	5					11	13		4	25	35.10

**Percents by Department\***

County Department	Total Offenses	Misde-meanor	Felony	Domestic Violence	Resist Arrest	Assault	Public Intox	Alcohol Involved	Drugs Involved	Traffic Crash	Female	Male
Platte County	162	93.83%	24.69%	7.41%		7.41%		41.36%	25.93%	3.09%	15.43%	84.57%
Guernsey PD	14	85.71%	21.43%	21.43%				35.71%		7.14%	14.29%	85.71%
Other	1		100.00%									100.00%
Platte SO	56	98.21%	12.50%	10.71%		5.36%		53.57%	26.79%	3.57%	12.50%	87.50%
Wheatland PD	62	93.55%	38.71%	4.84%		14.52%		33.87%	22.58%	3.23%	19.35%	80.65%
WHP	29	93.10%	17.24%					37.93%	44.83%		13.79%	86.21%

\*Total percents may not equal 100 due to lack of information, or single arrests involving multiple crimes.

**Platte County Arrests**  
January 1, 2022 - December 31, 2022

**MIP Arrests**

County Department	Total Underage Offenses	MIP Arrests	% MIP of Total	Average MIP BAC
Platte County	9			
Guernsey PD	1			
Other				
Platte SO	6			
Wheatland PD	1			
WHP	1			

**Meth, Drugs & Public Intoxication**

County Department	Total Offenses	Meth Involved	Marijuana Involved	Drugs Involved	Public Intox.	Pub. Intox. Ave. BAC
Platte County	162	15	32	42		
Guernsey PD	14					
Other	1					
Platte SO	56	5	10	15		
Wheatland PD	62	5	12	14		
WHP	29	5	10	13		

**DUI Arrests**

County Department	Total Offenses	DUI Offenses	% DUI Of Total	Ave. BAC	DUI Involving Drugs	% DUI involving Drugs
Platte County	162	61	37.65%	0.175	11	18.03%
Guernsey PD	14	4	28.57%	0.250		
Other	1					
Platte SO	56	26	46.43%	0.163	4	15.38%
Wheatland PD	62	19	30.65%	0.176	5	26.32%
WHP	29	12	41.38%	0.202	2	16.67%

**Traffic Crashes**

County Department	Traffic Crashes	Alcohol Involved	% Alcohol Involved	Ave. BAC	Drugs Involved	% Drugs Involved
Platte County	5	4	80.00%	0.188		
Guernsey PD	1	1	100.00%	0.250		
Other						
Platte SO	2	1	50.00%	0.080		
Wheatland PD	2	2	100.00%	0.210		
WHP						

**Underage DUI Arrests**

County Department	DUI Offenses	Underage Offenses	% DUI Of Total	Ave. BAC	DUI Involving Drugs	% DUI involving Drugs
Platte County	61	2	3.28%	0.080		
Guernsey PD	4					
Other						
Platte SO	26	1	3.85%	0.080		
Wheatland PD	19					
WHP	12	1	8.33%			

**Warrant Arrests\***

County Department	Warrant Arrests
Platte County	107
Guernsey PD	14
Platte SO	51
Wheatland PD	31
WHP	11

\*Independent Statistic

**Platte County Arrests**  
January 1, 2022 - December 31, 2022

**Total Offenses**

County Department	Total Offenses	Number Involving Alcohol	Percent Involving Alcohol	Number Involving Drugs	Percent Involving Drugs
Platte County	162	67	41.36%	42	25.93%
Guernsey PD	14	5	35.71%		
Other	1				
Platte SO	56	30	53.57%	15	26.79%
Wheatland PD	62	21	33.87%	14	22.58%
WHP	29	11	37.93%	13	44.83%

**Domestic Violence**

County Department	Domestic Violence Offenses	Number Involving Alcohol	Percent Involving Alcohol	Number Involving Drugs	Percent Involving Drugs
Platte County	12	2	16.67%	2	16.67%
Guernsey PD	3	1	33.33%		
Other					
Platte SO	6	1	16.67%	2	33.33%
Wheatland PD	3				
WHP					

**Felony Offenses**

County Department	Felony Offenses	Number Involving Alcohol	Percent Involving Alcohol	Number Involving Drugs	Percent Involving Drugs
Platte County	40	6	15.00%	20	50.00%
Guernsey PD	3				
Other	1				
Platte SO	7	1	14.29%	5	71.43%
Wheatland PD	24	4	16.67%	11	45.83%
WHP	5	1	20.00%	4	80.00%

**Resisting Arrests**

County Department	Resisting Arrest Offenses	Number Involving Alcohol	Percent Involving Alcohol	Number Involving Drugs	Percent Involving Drugs
Platte County					
Guernsey PD					
Other					
Platte SO					
Wheatland PD					
WHP					

**Misdemeanor Offenses**

County Department	Misdemeanor Offenses	Number Involving Alcohol	Percent Involving Alcohol	Number Involving Drugs	Percent Involving Drugs
Platte County	152	66	43.42%	40	26.32%
Guernsey PD	12	5	41.67%		
Other					
Platte SO	55	30	54.55%	15	27.27%
Wheatland PD	58	21	36.21%	13	22.41%
WHP	27	10	37.04%	12	44.44%

**Assault**

County Department	Assault Offenses	Number Involving Alcohol	Percent Involving Alcohol	Number Involving Drugs	Percent Involving Drugs
Platte County	12	4	33.33%		
Guernsey PD					
Other					
Platte SO	3	3	100.00%		
Wheatland PD	9	1	11.11%		
WHP					

**Platte County Arrests**  
**January 1, 2022 - December 31, 2022**

County Department	Location of Consumption							Point of Sale				
	Alcohol Involved	Home	Bar	Private Party	Public Event	Vehicle	No Response	Home	Retail Liquor	Private Party	Public Event	No Response
Platte County	67	4	7	3		4	10		2	3		
Guernsey PD	5						1					
Other												
Platte SO	30	3	5	2		3	6		1	2		
Wheatland PD	21	1	2	1		1	2		1	1		
WHP	11						1					

Bar Name	Platte County SO	Wheatland PO	Total
COMMODORE BAR		1	1
GUADALAJARA FAMILY RESTAURANT	1		1
LANDMARK BAR	1		1
<b>Total</b>	<b>2</b>	<b>1</b>	<b>3</b>

\*Total of percents in Location of Consumption and Point of Sale categories may exceed 100% due to single arrests involving more than one location or point of sale.

No public events named in alcohol collection reports.

**Sheridan County Arrests**  
**January 1, 2022 - December 31, 2022**

**Numbers by Department**

County Department	Total Offenses	Misde-meanor	Felony	Domestic Violence	Resist Arrest	Assault	Public Intox	Alcohol Involved	Drugs Involved	Traffic Crash	Female	Male	Average Age
Sheridan County	498	474	32	22		10	78	360	84	31	134	364	38.79
Sheridan SO	68	64	4	4		1	2	47	8	9	16	52	38.31
Sheridan PD	413	397	24	18		9	76	304	69	21	114	299	39.07
Other	5	1	4						2		2	3	32.80
WHP	12	12						9	5	1	2	10	34.25

**Percents by Department\***

County Department	Total Offenses	Misde-meanor	Felony	Domestic Violence	Resist Arrest	Assault	Public Intox	Alcohol Involved	Drugs Involved	Traffic Crash	Female	Male
Sheridan County	498	95.18%	6.43%	4.42%		2.01%	15.66%	72.29%	16.87%	6.22%	26.91%	73.09%
Sheridan SO	68	94.12%	5.88%	5.88%		1.47%	2.94%	69.12%	11.76%	13.24%	23.53%	76.47%
Sheridan PD	413	96.13%	5.81%	4.36%		2.18%	18.40%	73.61%	16.71%	5.08%	27.60%	72.40%
Other	5	20.00%	80.00%						40.00%		40.00%	60.00%
WHP	12	100.00%						75.00%	41.67%	8.33%	16.67%	83.33%

\*Total percents may not equal 100 due to lack of information, or single arrests involving multiple crimes.

**Sheridan County Arrests**  
January 1, 2022 - December 31, 2022

**MIP Arrests**

County Department	Total Underage Offenses	MIP Arrests	% MIP of Total	Average MIP BAC
Sheridan County	19	1	5.26%	0.070
Sheridan SO	5			
Sheridan PD	13	1	7.69%	0.070
Other				
WHP	1			

**Meth, Drugs & Public Intoxication**

County Department	Total Offenses	Meth Involved	Marijuana Involved	Drugs Involved	Public Intox.	Pub. Intox. Ave. BAC
Sheridan County	498	26	32	84	78	0.146
Sheridan SO	68	4	1	8	2	
Sheridan PD	413	21	25	69	76	0.146
Other	5	1	1	2		
WHP	12		5	5		

**DUI Arrests**

County Department	Total Offenses	DUI Offenses	% DUI Of Total	Ave. BAC	DUI Involving Drugs	% DUI involving Drugs
Sheridan County	906	218	24.06%	0.149	21	9.63%
Sheridan SO	68	35	51.47%	0.168	1	2.86%
Sheridan PD	413	173	41.89%	0.146	17	9.83%
Other	413					
WHP	12	10	83.33%	0.134	3	30.00%

**Traffic Crashes**

County Department	Traffic Crashes	Alcohol Involved	% Alcohol Involved	Ave. BAC	Drugs Involved	% Drugs Involved
Sheridan County	31	29	93.55%	0.151	3	9.68%
Sheridan SO	9	9	100.00%	0.200	1	11.11%
Sheridan PD	21	19	90.48%	0.133	2	9.52%
Other						
WHP	1	1	100.00%	0.130		

**Underage DUI Arrests**

County Department	DUI Offenses	Underage Offenses	% DUI Of Total	Ave. BAC	DUI Involving Drugs	% DUI involving Drugs
Sheridan County	218	11	5.05%	0.133	2	18.18%
Sheridan SO	35	2	5.71%			
Sheridan PD	173	9	5.20%	0.133	2	22.22%
Other						
WHP	10					

**Warrant Arrests\***

County Department	Warrant Arrests
Sheridan County	506
Sheridan SO	218
Sheridan PD	282
WHP	5
Other	1

\*Independent Statistic

**Sheridan County Arrests**  
**January 1, 2022 - December 31, 2022**

**Total Offenses**

County Department	Total Offenses	Number Involving Alcohol	Percent Involving Alcohol	Number Involving Drugs	Percent Involving Drugs
Sheridan County	498	360	72.29%	84	16.87%
Sheridan SO	68	47	69.12%	8	11.76%
Sheridan PD	413	304	73.61%	69	16.71%
Other	5			2	40.00%
WHP	12	9	75.00%	5	41.67%

**Felony Offenses**

County Department	Felony Offenses	Number Involving Alcohol	Percent Involving Alcohol	Number Involving Drugs	Percent Involving Drugs
Sheridan County	32	7	21.88%	11	34.38%
Sheridan SO	4				
Sheridan PD	24	7	29.17%	9	37.50%
Other	4			2	50.00%
WHP					

**Misdemeanor Offenses**

County Department	Misdemeanor Offenses	Number Involving Alcohol	Percent Involving Alcohol	Number Involving Drugs	Percent Involving Drugs
Sheridan County	474	355	74.89%	78	16.46%
Sheridan SO	64	47	73.44%	8	12.50%
Sheridan PD	397	299	75.31%	65	16.37%
Other	1				
WHP	12	9	75.00%	5	41.67%

**Domestic Violence**

County Department	Domestic Violence Offenses	Number Involving Alcohol	Percent Involving Alcohol	Number Involving Drugs	Percent Involving Drugs
Sheridan County	22	9	40.91%		
Sheridan SO	4	3	75.00%		
Sheridan PD	18	6	33.33%		
Other					
WHP					

**Resisting Arrests**

County Department	Resisting Arrest Offenses	Number Involving Alcohol	Percent Involving Alcohol	Number Involving Drugs	Percent Involving Drugs
Sheridan County					
Sheridan SO					
Sheridan PD					
Other					
WHP					

**Assault**

County Department	Assault Offenses	Number Involving Alcohol	Percent Involving Alcohol	Number Involving Drugs	Percent Involving Drugs
Sheridan County	10	6	60.00%		
Sheridan SO	1	1	100.00%		
Sheridan PD	9	5	55.56%		
Other					
WHP					



**Sheridan County Arrests**  
**January 1, 2022 - December 31, 2022**

County Department	Location of Consumption							Point of Sale				
	Alcohol Involved	Home	Bar	Private Party	Public Event	Vehicle	No Response	Home	Retail Liquor	Private Party	Public Event	No Response
Sheridan County	360	104	158	7	8	13	256	2	82	46	6	15
Sheridan SO	47	22	27	1		4	31		8	4	1	3
Sheridan PD	304	79	127	6	8	8	216	2	73	42	5	12
Other		1	1				3					
WHP	9	2	3			1	6		1			

Bar Name	Sheridan SO	Sheridan PD	Total
BEAVER CREEK SALOON		3	3
BLACK TOOTH BREWING COMPANY		3	3
COMMON CENTS FOODSTORE		1	1
LAST CHANCE BAR	1		1
MOUNTAIN INN BAR	1		1
MY BUDDYS PLACE	1	2	3
NO NAME BAR		3	3
PARKMAN BAR & GRILL	1		1
RAINBOW BAR		10	10
THE MINT BAR		4	4
<b>Total</b>	<b>4</b>	<b>26</b>	<b>30</b>

\*Total of percents in Location of Consumption and Point of Sale categories may exceed 100% due to single arrests involving more than one location or point of sale.

No public events named in alcohol collection reports.

**Sublette County Arrests  
January 1, 2022 - December 31, 2022**

**Numbers by Department**

County Department	Total Offenses	Misde-meanor	Felony	Domestic Violence	Resist Arrest	Assault	Public Intox	Alcohol Involved	Drugs Involved	Traffic Crash	Female	Male	Average Age
Sublette County	125	118	9	9	1	4	2	81	35	11	36	89	36.43
Sublette SO	93	89	4	9	1	4	2	63	23	6	28	65	36.33
WHP	32	29	5					18	12	5	8	24	36.72

**Percents by Department\***

County Department	Total Offenses	Misde-meanor	Felony	Domestic Violence	Resist Arrest	Assault	Public Intox	Alcohol Involved	Drugs Involved	Traffic Crash	Female	Male
Sublette County	125	94.40%	7.20%	7.20%	0.80%	3.20%	1.60%	64.80%	28.00%	8.80%	28.80%	71.20%
Sublette SO	93	95.70%	4.30%	9.68%	1.08%	4.30%	2.15%	67.74%	24.73%	6.45%	30.11%	69.89%
WHP	32	90.63%	15.63%					56.25%	37.50%	15.63%	25.00%	75.00%

\*Total percents may not equal 100 due to lack of information, or single arrests involving multiple crimes.

**Sublette County Arrests**  
January 1, 2022 - December 31, 2022

**MIP Arrests**

County Department	Total Undeage Offenses	MIP Arrests	% MIP of Total	Average MIP BAC
Sublette County	10			
Sublette SO	9			
WHP	1			

**Meth, Drugs & Public Intoxication**

County Department	Total Offenses	Meth Involved	Marijuana Involved	Drugs Involved	Public Intox.	Pub. Intox Ave. BAC
Sublette County	125		33	35	2	0.145
Sublette SO	93		21	23	2	0.145
WHP	32		12	12		

**DUI Arrests**

County Department	Total Offenses	DUI Offenses	% DUI Of Total	Ave. BAC	DUI Involving Drugs	% DUI involving Drugs
Sublette County	125	63	50.40%	0.162	7	11.11%
Sublette SO	93	42	45.16%	0.171	4	9.52%
WHP	32	21	65.63%	0.138	3	14.29%

**Traffic Crashes**

County Department	Traffic Crashes	Alcohol Involved	% Alcohol Involved	Ave. BAC	Drugs Involved	% Drugs Involved
Sublette County	11	9	81.82%	0.154	2	18.18%
Sublette SO	6	6	100.00%	0.172		
WHP	5	3	60.00%	0.123	2	40.00%

**Underage DUI Arrests**

County Department	DUI Offenses	Underage Offenses	% DUI Of Total	Ave. BAC	DUI Involving Drugs	% DUI involving Drugs
Sublette County	63	3	4.76%	0.155		
Sublette SO	42	3	7.14%	0.155		
WHP	21					

**Warrant Arrests\***

County Department	Warrant Arrests
Sublette County	43
Sublette SO	41
WHP	2

\*Independent Statistic

**Sublette County Arrests**  
January 1, 2022 - December 31, 2022

**Total Offenses**

County Department	Total Offenses	Number Involving Alcohol	Percent Involving Alcohol	Number Involving Drugs	Percent Involving Drugs
Sublette County	125	81	64.80%	35	28.00%
Sublette SO	93	63	67.74%	23	24.73%
WHP	32	18	56.25%	12	37.50%

**Felony Offenses**

County Department	Felony Offenses	Number Involving Alcohol	Percent Involving Alcohol	Number Involving Drugs	Percent Involving Drugs
Sublette County	9	2	22.22%	7	77.78%
Sublette SO	4	1	25.00%	3	75.00%
WHP	5	1	20.00%	4	80.00%

**Misdemeanor Offenses**

County Department	Misdemeanor Offenses	Number Involving Alcohol	Percent Involving Alcohol	Number Involving Drugs	Percent Involving Drugs
Sublette County	118	80	67.80%	29	24.58%
Sublette SO	89	62	69.66%	20	22.47%
WHP	29	18	62.07%	9	31.03%

**Domestic Violence**

County Department	Domestic Violence Offenses	Number Involving Alcohol	Percent Involving Alcohol	Number Involving Drugs	Percent Involving Drugs
Sublette County	9	6	66.67%	1	11.11%
Sublette SO	9	6	66.67%	1	11.11%
WHP					

**Resisting Arrests**

County Department	Resisting Arrest Offenses	Number Involving Alcohol	Percent Involving Alcohol	Number Involving Drugs	Percent Involving Drugs
Sublette County	1	1	100.00%	1	100.00%
Sublette SO	1	1	100.00%	1	100.00%
WHP					

**Assault**

County Department	Assault Offenses	Number Involving Alcohol	Percent Involving Alcohol	Number Involving Drugs	Percent Involving Drugs
Sublette County	4	3	75.00%		
Sublette SO	4	3	75.00%		
WHP					

**Sublette County Arrests  
January 1, 2022 - December 31, 2022**

County Department	Location of Consumption							Point of Sale				
	Alcohol Involved	Home	Bar	Private Party	Public Event	Vehicle	No Response	Home	Retail Liquor	Private Party	Public Event	No Response
Sublette County	81	20	37	4		5	50		25	27		
Sublette SO	63	16	28	2		4	34		18	19		
WHP	18	4	9	2		1	16		7	8		

Bar Name	Subletter SO	WHP	Total
BOULDER STORE & PUB	1		1
CORRAL BAR	6		6
COWBOY BAR (THE)	2	1	3
SILVER SPUR BAR & SHADY SIDE	2		2
OTHER	1	4	5
<b>Total</b>	<b>12</b>	<b>5</b>	<b>17</b>

\*Total of percents in Location of Consumption and Point of Sale categories may exceed 100% due to single arrests involving more than one location or point of sale.

No public events named in alcohol collection reports.

**Sweetwater County Arrests**  
**January 1, 2022 - December 31, 2022**

**Numbers by Department**

County Department	Total Offenses	Misde-meanor	Felony	Domestic Violence	Resist Arrest	Assault	Public Intox	Alcohol Involved	Drugs Involved	Traffic Crash	Female	Male	Average Age
Sweetwater Co.	703	649	133	62	27	26	128	412	165	70	155	548	36.60
Green River PD	80	76	9	15	1	2	13	56	9	8	17	63	40.13
Other	4	1	3			1			1		2	2	34.75
Rock Springs PD	412	386	77	43	19	16	112	255	78	38	96	316	35.33
Sweetwater SO	101	89	23	4	2	7	2	47	26	7	18	83	38.00
WHP	106	97	21		5		1	54	51	17	22	84	37.64

**Percents by Department\***

County Department	Total Offenses	Misde-meanor	Felony	Domestic Violence	Resist Arrest	Assault	Public Intox	Alcohol Involved	Drugs Involved	Traffic Crash	Female	Male
Sweetwater Co.	703	92.32%	18.92%	8.82%	3.84%	3.70%	18.21%	58.61%	23.47%	9.96%	22.05%	77.95%
Green River PD	80	95.00%	11.25%	18.75%	1.25%	2.50%	16.25%	70.00%	11.25%	10.00%	21.25%	78.75%
Other	4	25.00%	75.00%			25.00%			25.00%		50.00%	50.00%
Rock Springs PD	412	93.69%	18.69%	10.44%	4.61%	3.88%	27.18%	61.89%	18.93%	9.22%	23.30%	76.70%
Sweetwater SO	101	88.12%	22.77%	3.96%	1.98%	6.93%	1.98%	46.53%	25.74%	6.93%	17.82%	82.18%
WHP	106	91.51%	19.81%		4.72%		0.94%	50.94%	48.11%	16.04%	20.75%	79.25%

\*Total percents may not equal 100 due to lack of information, or single arrests involving multiple crimes.

**Sweetwater County Arrests**  
January 1, 2022 - December 31, 2022

**MIP Arrests**

County Department	Total Underage Offenses	MIP Arrests	% MIP of Total	Average MIP BAC
Sweetwater Co.	60	3	5.00%	0.183
Green River PD	6			
Other				
Rock Springs PD	39	3	7.69%	0.183
Sweetwater SO	10			
WHP	5			

**Meth, Drugs & Public Intoxication**

County Department	Total Offenses	Meth Involved	Marijuana Involved	Drugs Involved	Public Intox.	Pub. Intox. Ave. BAC
Sweetwater Co.	703	76	97	165	128	0.195
Green River PD	80	4	5	9	13	0.210
Other	4	1		1		
Rock Springs PD	412	46	33	78	112	0.194
Sweetwater SO	101	9	20	26	2	0.180
WHP	106	16	39	51	1	0.150

**DUI Arrests**

County Department	Total Offenses	DUI Offenses	% DUI Of Total	Ave. BAC	DUI Involving Drugs	% DUI involving Drugs
Sweetwater Co.	703	231	32.86%	0.177	43	18.61%
Green River PD	80	27	33.75%	0.176	4	14.81%
Other	4					
Rock Springs PD	412	109	26.46%	0.183	15	13.76%
Sweetwater SO	101	32	31.68%	0.170	3	9.38%
WHP	106	63	59.43%	0.171	21	33.33%

**Traffic Crashes**

County Department	Traffic Crashes	Alcohol Involved	% Alcohol Involved	Ave. BAC	Drugs Involved	% Drugs Involved
Sweetwater Co.	70	53	75.71%	0.179	16	22.86%
Green River PD	8	8	100.00%	0.184	1	12.50%
Other						
Rock Springs PD	38	29	76.32%	0.191	6	15.79%
Sweetwater SO	7	4	57.14%	0.120	3	42.86%
WHP	17	12	70.59%	0.178	6	35.29%

**Underage DUI Arrests**

County Department	DUI Offenses	Underage Offenses	% DUI Of Total	Ave. BAC	DUI Involving Drugs	% DUI involving Drugs
Sweetwater Co.	231	8	3.46%	0.127	1	12.50%
Green River PD	27					
Other						
Rock Springs PD	109	3	2.75%	0.107		
Sweetwater SO	32	3	9.38%	0.150		
WHP	63	2	3.17%	0.140	1	50.00%

**Warrant Arrests\***

County Department	Warrant Arrests
Sweetwater Co.	608
Green River PD	83
Other	12
Rock Springs PD	174
Sweetwater SO	323
WHP	16

\*Independent Statistic

**Sweetwater County Arrests  
January 1, 2022 - December 31, 2022**

**Total Offenses**

County Department	Total Offenses	Number Involving Alcohol	Percent Involving Alcohol	Number Involving Drugs	Percent Involving Drugs
Sweetwater Co.	703	412	58.61%	165	23.47%
Green River PD	80	56	70.00%	9	11.25%
Other	4			1	25.00%
Rock Springs PD	412	255	61.89%	78	18.93%
Sweetwater SO	101	47	46.53%	26	25.74%
WHP	106	54	50.94%	51	48.11%

**Domestic Violence**

County Department	Domestic Violence Offenses	Number Involving Alcohol	Percent Involving Alcohol	Number Involving Drugs	Percent Involving Drugs
Sweetwater Co.	62	33	53.23%	2	3.23%
Green River PD	15	11	73.33%		
Other					
Rock Springs PD	43	20	46.51%	2	4.65%
Sweetwater SO	4	2	50.00%		
WHP					

**Felony Offenses**

County Department	Felony Offenses	Number Involving Alcohol	Percent Involving Alcohol	Number Involving Drugs	Percent Involving Drugs
Sweetwater Co.	133	34	25.56%	61	45.86%
Green River PD	9	6	66.67%	1	11.11%
Other	3			1	33.33%
Rock Springs PD	77	22	28.57%	32	41.56%
Sweetwater SO	23	6	26.09%	7	30.43%
WHP	21			20	95.24%

**Resisting Arrests**

County Department	Resisting Arrest Offenses	Number Involving Alcohol	Percent Involving Alcohol	Number Involving Drugs	Percent Involving Drugs
Sweetwater Co.	27	19	70.37%	4	14.81%
Green River PD	1	1	100.00%		
Other					
Rock Springs PD	19	16	84.21%		
Sweetwater SO	2				
WHP	5	2	40.00%	4	80.00%

**Misdemeanor Offenses**

County Department	Misdemeanor Offenses	Number Involving Alcohol	Percent Involving Alcohol	Number Involving Drugs	Percent Involving Drugs
Sweetwater Co.	649	403	62.10%	142	21.88%
Green River PD	76	54	71.05%	8	10.53%
Other	1				
Rock Springs PD	386	251	65.03%	68	17.62%
Sweetwater SO	89	44	49.44%	24	26.97%
WHP	97	54	55.67%	42	43.30%

**Assault**

County Department	Assault Offenses	Number Involving Alcohol	Percent Involving Alcohol	Number Involving Drugs	Percent Involving Drugs
Sweetwater Co.	26	7	26.92%	1	3.85%
Green River PD	2	1	50.00%		
Other	1				
Rock Springs PD	16	4	25.00%	1	6.25%
Sweetwater SO	7	2	28.57%		
WHP					



**Sweetwater County Arrests**  
**January 1, 2022 - December 31, 2022**

County Department	Location of Consumption							Point of Sale				
	Alcohol Involved	Home	Bar	Private Party	Public Event	Vehicle	No Response	Home	Retail Liquor	Private Party	Public Event	No Response
Sweetwater Co.	412	31	124	3	6	31	296		92	94	4	30
Green River PD	56	6	13	1		3	38		8	9		2
Other							1					1
Rock Springs PD	255	21	98	2	6	8	166		75	76	4	25
Sweetwater SO	47	4	9			4	38		6	6		1
WHP	54		4			16	53		3	3		1

Bar Name	Green River PD	Rock Springs PD	Sweetwater SO	WHP	Total
APPLEBEES NEIGHBORHOOD GRILL & BAR		1			1
ARCHIE HAY POST #24		1			1
BAREBACK SALOON		27	1		28
BITTER CREEK BREWING		1			1
BOMBERS SPORTS BAR		17		2	19
EVE'S		1			1
GATEWAY LIQUORS		2			2
HITCHING POST SALOON		1			1
JOE'S LIQUOR		2			2
LITTLE AMERICA			1		1
OLD CHICAGO	2	3			5
PONDEROSA BAR	2				2
PORKYS BAR		5	1		6
POUR HOUSE (THE)		3	1		4
RED FEATHER BAR & PACKAGE LIQUORS	2				2
SADDLELITE SALOON & 24 HR C STORE		5			5
THE BREWERY		2			2
TOASTMASTER BAR & LIQUOR		1	1		2
WOLF DEN BAR		2			2
WYOMING CLUB		1			1
OTHER		1			1
<b>Total</b>	<b>6</b>	<b>76</b>	<b>5</b>	<b>2</b>	<b>89</b>

\*Total of percents in Location of Consumption and Point of Sale categories may exceed 100% due to single arrests involving more than one location or point of sale.

No public events named in alcohol collection reports.

**Teton County Arrests**  
**January 1, 2022 - December 31, 2022**

**Numbers by Department**

County Department	Total Offenses	Misde-meanor	Felony	Domestic Violence	Resist Arrest	Assault	Public Intox	Alcohol Involved	Drugs Involved	Traffic Crash	Female	Male	Average Age
Teton County	230	224	6	8		2	42	197	9	7	52	178	34.87
Jackson PD	115	113	2	3		1	38	102	2	4	26	89	62.00
Other	4	4						4			2	2	39.88
Park Service	8	8						8				8	33.32
Teton County SO	99	96	3	5		1	4	80	6	2	23	76	35.05
WHP	4	3	1					3	1	1	1	3	38.00

**Percents by Department\***

County Department	Total Offenses	Misde-meanor	Felony	Domestic Violence	Resist Arrest	Assault	Public Intox	Alcohol Involved	Drugs Involved	Traffic Crash	Female	Male
Teton County	230	97.39%	2.61%	3.48%		0.87%	18.26%	85.65%	3.91%	3.04%	22.61%	77.39%
Jackson PD	115	98.26%	1.74%	2.61%		0.87%	33.04%	88.70%	1.74%	3.48%	22.61%	77.39%
Other	4	100.00%						100.00%			50.00%	50.00%
Park Service	8	100.00%						100.00%				100.00%
Teton County SO	99	96.97%	3.03%	5.05%		1.01%	4.04%	80.81%	6.06%	2.02%	23.23%	76.77%
WHP	4	75.00%	25.00%					75.00%	25.00%	25.00%	25.00%	75.00%

\*Total percents may not equal 100 due to lack of information, or single arrests involving multiple crimes.

**Teton County Arrests**  
January 1, 2022 - December 31, 2022

**MIP Arrests**

County Department	Total Underage Offenses	MIP Arrests	% MIP of Total	Average MIP BAC
Teton County	3			
Jackson PD	2			
Other				
Park Service				
Teton County SO	1			
WHP				

**Meth, Drugs & Public Intoxication**

County Department	Total Offenses	Meth Involved	Marijuana Involved	Drugs Involved	Public Intox.	Pub. Intox. Ave. BAC
Teton County	230	1	6	9	42	0.229
Jackson PD	115		1	2	38	0.233
Other	4					
Park Service	8					
Teton County SO	99	1	4	6	4	0.205
WHP	4		1	1		

**DUI Arrests**

County Department	Total Offenses	DUI Offenses	% DUI Of Total	Ave. BAC	DUI Involving Drugs	% DUI involving Drugs
Teton County	230	123	53.48%	0.163	2	1.63%
Jackson PD	115	51	44.35%	0.164		
Other	4	3	75.00%	0.153		
Park Service	8	8	100.00%	0.134		
Teton County SO	99	58	58.59%	0.168	2	3.45%
WHP	4	3	75.00%	0.140		

**Traffic Crashes**

County Department	Traffic Crashes	Alcohol Involved	% Alcohol Involved	Ave. BAC	Drugs Involved	% Drugs Involved
Teton County	7	6	85.71%	0.204	1	14.29%
Jackson PD	4	4	100.00%	0.198		
Other						
Park Service						
Teton County SO	2	2	100.00%	0.230		
WHP	1				1	100.00%

**Underage DUI Arrests**

County Department	DUI Offenses	Underage Offenses	% DUI Of Total	Ave. BAC	DUI Involving Drugs	% DUI involving Drugs
Teton County	123	2	1.63%	0.140		
Jackson PD	51	1	1.96%	0.140		
Other	3					
Park Service	8					
Teton County SO	58	1	1.72%			
WHP	3					

**Warrant Arrests\***

County Department	Warrant Arrests
Teton County	2
Jackson PD	1
Other	
Park Service	
Teton County SO	1
WHP	

\*Independent Statistic

**Teton County Arrests**  
January 1, 2022 - December 31, 2022

**Total Offenses**

County Department	Total Offenses	Number Involving Alcohol	Percent Involving Alcohol	Number Involving Drugs	Percent Involving Drugs
Teton County	230	197	85.65%	9	3.91%
Jackson PD	115	102	88.70%	2	1.74%
Other	4	4	100.00%		
Park Service	8	8	100.00%		
Teton County SO	99	80	80.81%	6	6.06%
WHP	4	3	75.00%	1	25.00%

**Felony Offenses**

County Department	Felony Offenses	Number Involving Alcohol	Percent Involving Alcohol	Number Involving Drugs	Percent Involving Drugs
Teton County	6	3	50.00%	3	50.00%
Jackson PD	2	2	100.00%		
Other					
Park Service					
Teton County SO	3	1	33.33%	2	66.67%
WHP	1			1	100.00%

**Misdemeanor Offenses**

County Department	Misdemeanor Offenses	Number Involving Alcohol	Percent Involving Alcohol	Number Involving Drugs	Percent Involving Drugs
Teton County	224	194	86.61%	6	2.68%
Jackson PD	113	100	88.50%	2	1.77%
Other	4	4	100.00%		
Park Service	8	8	100.00%		
Teton County SO	96	79	82.29%	4	4.17%
WHP	3	3	100.00%		

**Domestic Violence**

County Department	Domestic Violence Offenses	Number Involving Alcohol	Percent Involving Alcohol	Number Involving Drugs	Percent Involving Drugs
Teton County	8	4	50.00%		
Jackson PD	3	1	33.33%		
Other					
Park Service					
Teton County SO	5	3	60.00%		
WHP					

**Resisting Arrests**

County Department	Resisting Arrest Offenses	Number Involving Alcohol	Percent Involving Alcohol	Number Involving Drugs	Percent Involving Drugs
Teton County					
Jackson PD					
Other					
Park Service					
Teton County SO					
WHP					

**Assault**

County Department	Assault Offenses	Number Involving Alcohol	Percent Involving Alcohol	Number Involving Drugs	Percent Involving Drugs
Teton County	2	2	100.00%		
Jackson PD	1	1	100.00%		
Other					
Park Service					
Teton County SO	1	1	100.00%		
WHP					

**Teton County Arrests**  
**January 1, 2022 - December 31, 2022**

County Department	Alcohol Involved	Location of Consumption						No Response	Point of Sale				
		Home	Bar	Private Party	Public Event	Vehicle	Home		Retail Liquor	Private Party	Public Event	No Response	
Teton County	197	12	58	10	1	4	135		52	56	1	2	
Jackson PD	102	5	40	5		2	58		38	39			
Other	4	1	2				2		1	1			
Park Service	8		1				6		1	1			
Teton County SO	80	5	14	5	1	1	67		11	15	1	2	
WHP	3	1	1			1	2		1				

Bar Name	Jackson PD	Other	Teton Co SO	Park Service	Total
BPO ELKS 1713	1				1
BUBBA'S		1			1
CUTTY'S	1				1
KAMPAI			1		1
MIAZGAS			1		1
MILLION DOLLAR COWBOY BAR (THE)	7		2		9
ROSE (THE)	10		2		12
SIDEWINDERS	1				1
SILVER DOLLAR BAR	4			1	5
SNOW KING RESORT	2				2
STAGECOACH BAR	2		2		4
TIJUANA AUTHENTIC MEXICAN RESTAURANT	1				1
VIGINIAN TAVERN	2				2
STAGECOACH BAR					0
TETON PINES COUNTRY CLUB					0
OTHER			1		1
<b>Total</b>	<b>31</b>	<b>1</b>	<b>9</b>	<b>1</b>	<b>42</b>

\*Total of percents in Location of Consumption and Point of Sale categories may exceed 100% due to single arrests involving more than one location or point of sale.

No public events named in alcohol collection reports.

**Uinta County Arrests  
January 1, 2022 - December 31, 2022**

**Numbers by Department**

County Department	Total Offenses	Misde-meanor	Felony	Domestic Violence	Resist Arrest	Assault	Public Intox	Alcohol Involved	Drugs Involved	Traffic Crash	Female	Male	Average Age
Uinta County	365	321	48	38	1	11	18	160	96	18	97	268	38.30
Evanston PD	193	180	14	19		9	18	84	40	9	56	137	37.40
Lyman PD	1		1									1	19.00
Mtn. View PD	2	2		1				1			1	1	43.00
Uinta SO	113	102	12	18		2		60	20	4	29	84	39.23
Other	1		1									1	27.00
WHP	55	37	20		1			15	36	5	11	44	39.95

**Percents by Department\***

County Department	Total Offenses	Misde-meanor	Felony	Domestic Violence	Resist Arrest	Assault	Public Intox	Alcohol Involved	Drugs Involved	Traffic Crash	Female	Male
Uinta County	365	87.95%	13.15%	10.41%	0.27%	3.01%	4.93%	43.84%	26.30%	4.93%	26.58%	73.42%
Evanston PD	193	93.26%	7.25%	9.84%		4.66%	9.33%	43.52%	20.73%	4.66%	29.02%	70.98%
Lyman PD	1		100.00%									100.00%
Mtn. View PD	2	100.00%		50.00%				50.00%			50.00%	50.00%
Uinta SO	113	90.27%	10.62%	15.93%		1.77%		53.10%	17.70%	3.54%	25.66%	74.34%
Other	1		100.00%									100.00%
WHP	55	67.27%	36.36%		1.82%			27.27%	65.45%	9.09%	20.00%	80.00%

\*Total percents may not equal 100 due to lack of information, or single arrests involving multiple crimes.

**Uinta County Arrests**  
January 1, 2022 - December 31, 2022

**MIP Arrests**

County Department	Total Underage Offenses	MIP Arrests	% MIP of Total	Average MIP BAC
Uinta County	24			
Evanston PD	7			
Lyman PD	1			
Mtn. View PD				
Uinta SO	13			
Other				
WHP	3			

**Meth, Drugs & Public Intoxication**

County Department	Total Offenses	Meth Involved	Marijuana Involved	Drugs Involved	Public Intox.	Pub. Intox. Ave. BAC
Uinta County	365	31	42	96	18	0.210
Evanston PD	193	18	8	40	18	0.210
Lyman PD	1					
Mtn. View PD	2					
Uinta SO	113	8	6	20		
Other	1					
WHP	55	5	28	36		

**DUI Arrests**

County Department	Total Offenses	DUI Offenses	% DUI Of Total	Ave. BAC	DUI Involving Drugs	% DUI involving Drugs
Uinta County	365	128	35.07%	0.155	32	25.00%
Evanston PD	193	55	28.50%	0.149	11	20.00%
Lyman PD	1					
Mtn. View PD	2					
Uinta SO	113	51	45.13%	0.149	9	17.65%
Other	1					
WHP	55	22	40.00%	0.200	12	54.55%

**Traffic Crashes**

County Department	Traffic Crashes	Alcohol Involved	% Alcohol Involved	Ave. BAC	Drugs Involved	% Drugs Involved
Uinta County	18	12	66.67%	0.143	3	16.67%
Evanston PD	9	7	77.78%	0.170		
Lyman PD						
Mtn. View PD						
Uinta SO	4	3	75.00%	0.090	2	50.00%
Other						
WHP	5	2	40.00%		1	20.00%

**Underage DUI Arrests**

County Department	DUI Offenses	Underage Offenses	% DUI Of Total	Ave. BAC	DUI Involving Drugs	% DUI involving Drugs
Uinta County	128	7	5.47%	0.160	2	28.57%
Evanston PD	55	3	5.45%	0.100	1	33.33%
Lyman PD						
Mtn. View PD						
Uinta SO	51	3	5.88%	0.163	1	33.33%
Other						
WHP	22	1	4.55%	0.210		

**Warrant Arrests\***

County Department	Warrant Arrests
Uinta County	209
Evanston PD	131
Lyman PD	7
Mtn. View PD	2
Other	
Uinta SO	59
WHP	10

\*Independent Statistic

**Uinta County Arrests**  
January 1, 2022 - December 31, 2022

**Total Offenses**

County Department	Total Offenses	Number Involving Alcohol	Percent Involving Alcohol	Number Involving Drugs	Percent Involving Drugs
Uinta County	365	160	43.84%	96	26.30%
Evanston PD	193	84	43.52%	40	20.73%
Lyman PD	1				
Mtn. View PD	2	1	50.00%		
Uinta SO	113	60	53.10%	20	17.70%
Other	1				
WHP	55	15	27.27%	36	65.45%

**Domestic Violence**

County Department	Domestic Violence Offenses	Number Involving Alcohol	Percent Involving Alcohol	Number Involving Drugs	Percent Involving Drugs
Uinta County	38	12	31.58%	2	5.26%
Evanston PD	19	7	36.84%	2	10.53%
Lyman PD					
Mtn. View PD	1				
Uinta SO	18	5	27.78%		
Other					
WHP					

**Felony Offenses**

County Department	Felony Offenses	Number Involving Alcohol	Percent Involving Alcohol	Number Involving Drugs	Percent Involving Drugs
Uinta County	48	11	22.92%	31	64.58%
Evanston PD	14	4	28.57%	5	35.71%
Lyman PD	1				
Mtn. View PD					
Uinta SO	12	6	50.00%	6	50.00%
Other	1				
WHP	20	1	5.00%	20	100.00%

**Resisting Arrests**

County Department	Resisting Arrest Offenses	Number Involving Alcohol	Percent Involving Alcohol	Number Involving Drugs	Percent Involving Drugs
Uinta County	1				
Evanston PD					
Lyman PD					
Mtn. View PD					
Uinta SO					
Other					
WHP	1				

**Misdemeanor Offenses**

County Department	Misdemeanor Offenses	Number Involving Alcohol	Percent Involving Alcohol	Number Involving Drugs	Percent Involving Drugs
Uinta County	321	151	47.04%	68	21.18%
Evanston PD	180	81	45.00%	36	20.00%
Lyman PD					
Mtn. View PD	2	1	50.00%		
Uinta SO	102	55	53.92%	14	13.73%
Other					
WHP	37	14	37.84%	18	48.65%

**Assault**

County Department	Assault Offenses	Number Involving Alcohol	Percent Involving Alcohol	Number Involving Drugs	Percent Involving Drugs
Uinta County	11	7	63.64%		
Evanston PD	9	6	66.67%		
Lyman PD					
Mtn. View PD					
Uinta SO	2	1	50.00%		
Other					
WHP					



**Uinta County Arrests  
January 1, 2022 - December 31, 2022**

County Department	Location of Consumption							Point of Sale				
	Alcohol Involved	Home	Bar	Private Party	Public Event	Vehicle	No Response	Home	Retail Liquor	Private Party	Public Event	No Response
Uinta County	160	49	70	5	4	14	139	2	31	38	4	20
Evanston PD	84	17	28	3	1	2	79		13	16	1	16
Lyman PD												
Mtn. View PD	1	1	1						1	1		
Uinta SO	60	30	39	1	3	2	28	2	16	19	3	3
Other												
WHP	15	1	2	1		10	32		1	2		1

Bar Name	Evanston			Total
	PD	Uinta SO	WHP	
BADLANDS SALOON LIQUOR & LANES (THE)		2		2
COWBOY BAR		2	1	3
DON PEDRO FAMILY MEXICAN RESTAURANT		1		1
F & M LIQUOR		1		1
KATE'S	3	1		4
KNIGHTS INN	1			1
LEGAL TENDER LOUNGE	4	1		5
LINCOLN HIGHWAY TAVERN (THE)	2			2
SPIRITS OF RED MOUNTAIN	1			1
VFW POST 4280		1		1
<b>Total</b>	<b>11</b>	<b>9</b>	<b>1</b>	<b>21</b>

\*Total of percents in Location of Consumption and Point of Sale categories may exceed 100% due to single arrests involving more than one location or point of sale.

No public events named in alcohol collection reports.

**Washakie County Arrests**  
**January 1, 2022 - December 31, 2022**

**Numbers by Department**

County Department	Total Offenses	Misde-meanor	Felony	Domestic Violence	Resist Arrest	Assault	Public Intox	Alcohol Involved	Drugs Involved	Traffic Crash	Female	Male	Average Age
Washakie County	99	96	3	5	2	5	7	67	11	8	24	75	35.58
Washakie SO	35	34	1	2		2		26	1	4	9	26	36.40
Worland PD	62	60	2	3	2	3	7	40	10	4	14	48	35.23
WHP	2	2						1			1	1	32.00

**Percents by Department\***

County Department	Total Offenses	Misde-meanor	Felony	Domestic Violence	Resist Arrest	Assault	Public Intox	Alcohol Involved	Drugs Involved	Traffic Crash	Female	Male
Washakie County	99	96.97%	3.03%	5.05%	2.02%	5.05%	7.07%	67.68%	11.11%	8.08%	24.24%	75.76%
Washakie SO	35	97.14%	2.86%	5.71%		5.71%		74.29%	2.86%	11.43%	25.71%	74.29%
Worland PD	62	96.77%	3.23%	4.84%	3.23%	4.84%	11.29%	64.52%	16.13%	6.45%	22.58%	77.42%
WHP	2	100.00%						50.00%			50.00%	50.00%

\*Total percents may not equal 100 due to lack of information, or single arrests involving multiple crimes.

**Washakie County Arrests**  
January 1, 2022 - December 31, 2022

**MIP Arrests**

County Department	Total Underage Offenses	MIP Arrests	% MIP of Total	Average MIP BAC
Washakie County	14	4	28.57%	0.098
Washakie SO	2			
Worland PD	11	4	36.36%	0.098
WHP	1			

**Meth, Drugs & Public Intoxication**

County Department	Total Offenses	Meth Involved	Marijuana Involved	Drugs Involved	Public Intox.	Pub. Intox. Ave. BAC
Washakie County	99	6	5	11	7	0.255
Washakie SO	35		1	1		
Worland PD	62	6	4	10	7	0.255
WHP	2					

**DUI Arrests**

County Department	Total Offenses	DUI Offenses	% DUI Of Total	Ave. BAC	DUI Involving Drugs	% DUI involving Drugs
Washakie County	99	29	29.29%	0.152		
Washakie SO	35	11	31.43%	0.145		
Worland PD	62	17	27.42%	0.159		
WHP	2	1	50.00%	0.120		

**Traffic Crashes**

County Department	Traffic Crashes	Alcohol Involved	% Alcohol Involved	Ave. BAC	Drugs Involved	% Drugs Involved
Washakie County	8	7	87.50%	0.152		
Washakie SO	4	4	100.00%	0.170		
Worland PD	4	3	75.00%	0.133		
WHP						

**Underage DUI Arrests**

County Department	DUI Offenses	Underage Offenses	% DUI Of Total	Ave. BAC	DUI Involving Drugs	% DUI involving Drugs
Washakie County	29	2	6.90%	0.120		
Washakie SO	11	1	9.09%	0.120		
Worland PD	17	1	5.88%			
WHP	1					

**Warrant Arrests\***

County Department	Warrant Arrests
Washakie County	34
Washakie County Sheriff's Office	11
Worland Police Department	23
Wyoming Highway Patrol	

\*Independent Statistic

**Washakie County Arrests**  
January 1, 2022 - December 31, 2022

**Total Offenses**

County Department	Total Offenses	Number Involving Alcohol	Percent Involving Alcohol	Number Involving Drugs	Percent Involving Drugs
Washakie County	99	67	67.68%	11	11.11%
Washakie SO	35	26	74.29%	1	2.86%
Worland PD	62	40	64.52%	10	16.13%
WHP	2	1	50.00%		

**Domestic Violence**

County Department	Domestic Violence Offenses	Number Involving Alcohol	Percent Involving Alcohol	Number Involving Drugs	Percent Involving Drugs
Washakie County	5	3	60.00%		
Washakie SO	2	1	50.00%		
Worland PD	3	2	66.67%		
WHP					

**Felony Offenses**

County Department	Felony Offenses	Number Involving Alcohol	Percent Involving Alcohol	Number Involving Drugs	Percent Involving Drugs
Washakie County	3	1	33.33%	2	66.67%
Washakie SO	1	1	100.00%	1	100.00%
Worland PD	2			1	50.00%
WHP					

**Resisting Arrests**

County Department	Resisting Arrest Offenses	Number Involving Alcohol	Percent Involving Alcohol	Number Involving Drugs	Percent Involving Drugs
Washakie County	2	2	100.00%		
Washakie SO					
Worland PD	2	2	100.00%		
WHP					

**Misdemeanor Offenses**

County Department	Misdemeanor Offenses	Number Involving Alcohol	Percent Involving Alcohol	Number Involving Drugs	Percent Involving Drugs
Washakie County	96	66	68.75%	9	9.38%
Washakie SO	34	25	73.53%		
Worland PD	60	40	66.67%	9	15.00%
WHP	2	1	50.00%		

**Assault**

County Department	Assault Offenses	Number Involving Alcohol	Percent Involving Alcohol	Number Involving Drugs	Percent Involving Drugs
Washakie County	5	4	80.00%		
Washakie SO	2	1	50.00%		
Worland PD	3	3	100.00%		
WHP					

**Washakie County Arrests  
January 1, 2022 - December 31, 2022**

County Department	Location of Consumption							Point of Sale				
	Alcohol Involved	Home	Bar	Private Party	Public Event	Vehicle	No Response	Home	Retail Liquor	Private Party	Public Event	No Response
Washakie County	67	16	26	1	2	2	43		9	8		5
Washakie SO	26	7	11		2	1	11		4	4		
Worland PD	40	9	15	1		1	31		5	4		5
WHP	1						1					

Bar Name	Washakie		
	SO	Worland PD	Total
BIG HORN BAR	2		2
RENDEZVOUS LOUNGE		1	1
RUMORS SPORTS BAR & GRILL		1	1
STOGIE JOES		1	1
WAREHOUSE (THE)		1	1
OTHER	2		2
<b>Total</b>	<b>4</b>	<b>4</b>	<b>8</b>

\*Total of percents in Location of Consumption and Point of Sale categories may exceed 100% due to single arrests involving more than one location or point of sale.

No public events named in alcohol collection reports.

**Weston County Arrests**  
**January 1, 2022 - December 31, 2022**

**Numbers by Department**

County Department	Total Offenses	Misde-meanor	Felony	Domestic Violence	Resist Arrest	Assault	Public Intox	Alcohol Involved	Drugs Involved	Traffic Crash	Female	Male	Average Age
Weston County	44	42	4	8	1		2	27	7	2	6	38	39.68
Newcastle PD	17	16	2	3	1		1	13	4	1	1	16	41.18
Upton PD	7	7		2				2	1		3	4	33.00
Weston SO	12	12		3			1	10			2	10	43.00
Other	1	1										1	52.00
WHP	7	6	2					2	2	1		7	35.29

**Percents by Department\***

County Department	Total Offenses	Misde-meanor	Felony	Domestic Violence	Resist Arrest	Assault	Public Intox	Alcohol Involved	Drugs Involved	Traffic Crash	Female	Male
Weston County	44	95.45%	9.09%	18.18%	2.27%		4.55%	61.36%	15.91%	4.55%	13.64%	86.36%
Newcastle PD	17	94.12%	11.76%	17.65%	5.88%		5.88%	76.47%	23.53%	5.88%	5.88%	94.12%
Upton PD	7	100.00%		28.57%				28.57%	14.29%		42.86%	57.14%
Weston SO	12	100.00%		25.00%			8.33%	83.33%			16.67%	83.33%
Other	1	100.00%										100.00%
WHP	7	85.71%	28.57%					28.57%	28.57%	14.29%		100.00%

\*Total percents may not equal 100 due to lack of information, or single arrests involving multiple crimes.

**Weston County Arrests**  
January 1, 2022 - December 31, 2022

**MIP Arrests**

County Department	Total Underage Offenses	MIP Arrests	% MIP of Total	Average MIP BAC
Weston County	2	1	50.00%	
Newcastle PD				
Upton PD	1			
Weston SO				
Other				
WHP	1	1	100.00%	

**Meth, Drugs & Public Intoxication**

County Department	Total Offenses	Meth Involved	Marijuana Involved	Drugs Involved	Public Intox.	Pub. Intox. Ave. BAC
Weston County	44	4	5	7	2	
Newcastle PD	17	3	3	4	1	
Upton PD	7	1		1		
Weston SO	12				1	
Other	1					
WHP	7		2	2		

**DUI Arrests**

County Department	Total Offenses	DUI Offenses	% DUI Of Total	Ave. BAC	DUI Involving Drugs	% DUI involving Drugs
Weston County	44	13	29.55%	0.127	2	15.38%
Newcastle PD	17	5	29.41%	0.097	1	20.00%
Upton PD	7					
Weston SO	12	4	33.33%	0.185		
Other	1					
WHP	7	4	57.14%	0.100	1	25.00%

**Traffic Crashes**

County Department	Traffic Crashes	Alcohol Involved	% Alcohol Involved	Ave. BAC	Drugs Involved	% Drugs Involved
Weston County	2	1	50.00%	0.100	1	50.00%
Newcastle PD	1				1	100.00%
Upton PD						
Weston SO						
Other						
WHP	1	1	100.00%	0.100		

**Underage DUI Arrests**

County Department	DUI Offenses	Underage Offenses	% DUI Of Total	Ave. BAC	DUI Involving Drugs	% DUI involving Drugs
Weston County	13	1	7.69%			
Newcastle PD	5					
Upton PD						
Weston SO	4					
Other						
WHP	4	1	25.00%			

**Warrant Arrests\***

County Department	Warrant Arrests
Weston County	48
Newcastle PD	20
Upton PD	6
Weston SO	21
WHP	1
Other	

\*Independent Statistic

**Weston County Arrests**  
**January 1, 2022 - December 31, 2022**

**Total Offenses**

County Department	Total Offenses	Number Involving Alcohol	Percent Involving Alcohol	Number Involving Drugs	Percent Involving Drugs
Weston County	44	27	61.36%	7	15.91%
Newcastle PD	17	13	76.47%	4	23.53%
Upton PD	7	2	28.57%	1	14.29%
Weston SO	12	10	83.33%		
Other	1				
WHP	7	2	28.57%	2	28.57%

**Domestic Violence**

County Department	Domestic Violence Offenses	Number Involving Alcohol	Percent Involving Alcohol	Number Involving Drugs	Percent Involving Drugs
Weston County	8	6	75.00%		
Newcastle PD	3	3	100.00%		
Upton PD	2				
Weston SO	3	3	100.00%		
Other					
WHP					

**Felony Offenses**

County Department	Felony Offenses	Number Involving Alcohol	Percent Involving Alcohol	Number Involving Drugs	Percent Involving Drugs
Weston County	4	2	50.00%	1	25.00%
Newcastle PD	2	2	100.00%		
Upton PD					
Weston SO					
Other					
WHP	2			1	50.00%

**Resisting Arrests**

County Department	Resisting Arrest Offenses	Number Involving Alcohol	Percent Involving Alcohol	Number Involving Drugs	Percent Involving Drugs
Weston County	1	1	100.00%		
Newcastle PD	1	1	100.00%		
Upton PD					
Weston SO					
Other					
WHP					

**Misdemeanor Offenses**

County Department	Misdemeanor Offenses	Number Involving Alcohol	Percent Involving Alcohol	Number Involving Drugs	Percent Involving Drugs
Weston County	42	26	61.90%	6	14.29%
Newcastle PD	16	12	75.00%	4	25.00%
Upton PD	7	2	28.57%	1	14.29%
Weston SO	12	10	83.33%		
Other	1				
WHP	6	2	33.33%	1	16.67%

**Assault**

County Department	Assault Offenses	Number Involving Alcohol	Percent Involving Alcohol	Number Involving Drugs	Percent Involving Drugs
Weston County					
Newcastle PD					
Upton PD					
Weston SO					
Other					
WHP					



**Weston County Arrests**  
**January 1, 2022 - December 31, 2022**

County Department	Location of Consumption							Point of Sale				
	Alcohol Involved	Home	Bar	Private Party	Public Event	Vehicle	No Response	Home	Retail Liquor	Private Party	Public Event	No Response
Weston County	27	13	16	1	1	1	4		5	6		
Newcastle PD	13	8	10				2		3	3		
Upton PD	2	1	1						1	1		
Weston SO	10	4	5				2		1	1		
Other												
WHP	2			1	1	1				1		

Bar Name	Newcastle		
	PD	Weston SO	Total
COWBOY BAR		1	1
PERKINS TAVERN	1		1
SMOKE SHOP LIQUORS	1		1
<b>Total</b>	<b>2</b>	<b>1</b>	<b>3</b>

\*Total of percents in Location of Consumption and Point of Sale categories may exceed 100% due to single arrests involving more than one location or point of sale.

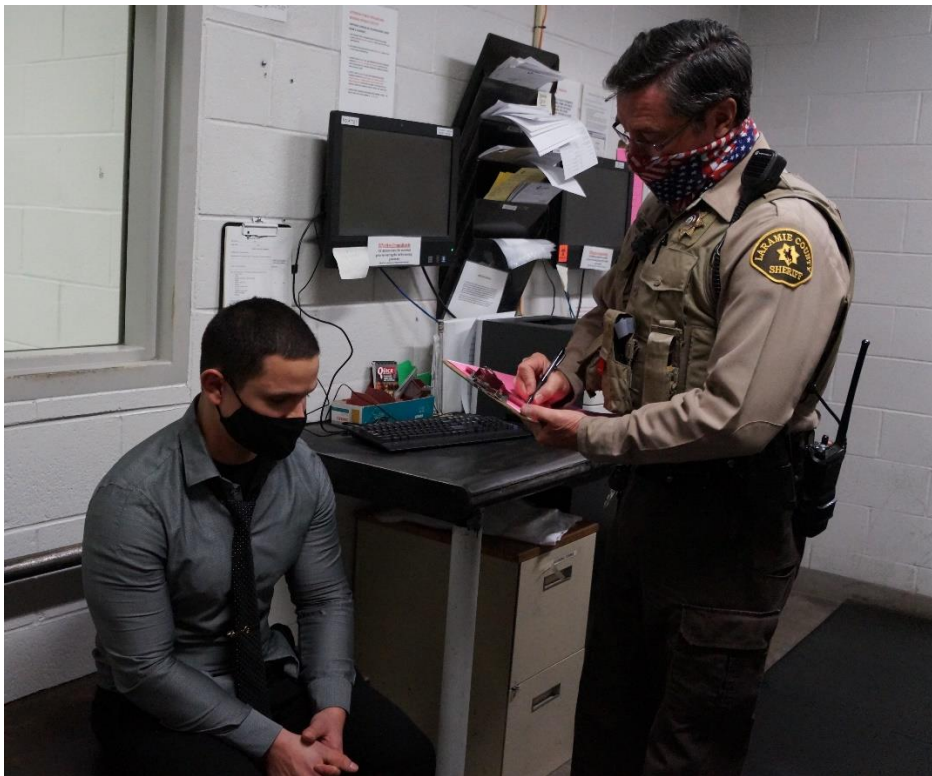
No public events named in alcohol collection reports.

### ACKNOWLEDGEMENTS

The Association instituted a data-collection process in 2019 whereby the arresting officer or book-in officer was able to submit an electronic reporting form to the Association at the time of the arrest. This replaced the use of hand-filled paper forms that were submitted by postal mail by each detention facility supervisor once a week.

This project was initiated in 2005 and continues to be accomplished due to the committed support of the law enforcement administrators in Wyoming and their generous commitment of agency resources. The day-to-day supervision and submittal of the project reporting forms and the individual efforts of every officer who filled out the reporting forms should be acknowledged as well. Their collective efforts were essential to the overall success of this project.

---



---

Data Collection Manager:  
Database Manager:  
Data Analysis:  
Project Manager:  
Cover photo:

Lori Emmert - WASCOP  
Bryan Morehouse – DigiTrack Solutions  
Elkhorn Resource Group  
Ernest L. Johnson - Johnson and Associates OT  
Converse County S.O.

## PROJECT MANAGER VITA

### CONTACT INFORMATION:

Ernest L. Johnson, Director of Services  
Johnson & Associates  
1036 Durango  
Douglas, WY 82633  
Phone: (307) 351-8614  
E-mail: [eljohns1@gmail.com](mailto:eljohns1@gmail.com)

### RELATED EDUCATION & EXPERIENCE:

- Twenty-four years of experience as an administrator of a state agency with direct responsibility for budget development and administration, planning, organizing, directing, staffing, and program services delivery.
- Master's degree in Public Administration; over thirty-five years of experience training and working with executives to achieve excellence in government, manage and implement change, increase organizational effectiveness, and maximize program efficiency.
- Conducted in-depth management studies for criminal justice agencies for the states of Massachusetts and New Hampshire. These studies assessed the delivery of program services by agencies with statewide responsibilities and provided recommendations for increasing organizational efficiency and agency credibility.
- Over thirty-five years of experience in researching, writing, and administering a variety of federal and state grants. Grants involved more than several million dollars for a wide variety of purposes: personnel, equipment, training, research and providing services with targeted priorities.
- Extensive experience in researching, evaluating, and implementing a wide variety of projects. These projects varied in scope and duration, and many required the involvement and partnership of multiple agencies and personnel throughout the state, as well as the enactment of state legislation.
  - Evaluation performed for the Substance Abuse Division - WDH – “Responsible Server Training Program” – October 2002
  - Managed the Wyoming First Lady's Initiative to Reduce Underage Drinking – November 2004 to September 2006
  - Managed project and authored report: A Comprehensive Review of Alcohol State Statutes: Findings and Recommendations for Reducing Underage and Binge Drinking in Wyoming – 2008
  - Management Review of the Wyoming Seat Belt Coalition: Mission, Goals and Work Scope – September 2011
- Inducted into the Wyoming Association of Sheriffs and Chiefs of Police Law Enforcement Hall of Fame - 2011

## Alcohol and Crime in Wyoming - 2022

---

- Thirty years of experience in conducting a variety of feasibility studies.
  - Conducted numerous feasibility studies for the Wyoming Legislature.
  - Most recent feasibility study conducted for the Town of Wright: “Should the Town of Wright create its own Police Department?” May 2004
- Conducted executive level training for the US Department of Justice/ State Department:
  - Instructed a 40-hour training course entitled “The Office of Professional Responsibility” for the Lithuania National Police command staff - 2001.
  - Instructed an 80-hour training course entitled “Sex Crimes Investigations” for Investigators and Prosecutors in Lithuania - 2001
- Faculty - Criminal Justice Department - University of Wyoming (September 2000 to September 2012)
  - Criminal Justice Management, Concepts of Modern Policing, Ethics in the Administration of Justice, Criminal Justice Civil Liability, Politics and the Judicial Process, Criminal Courts and Processes, and Police Deviance.
- Management consultant for the Wyoming Association of Sheriffs and Chiefs of Police - Projects completed or currently in progress:
  - Evaluation of Alcohol Factors in Custodial Arrest in Wyoming – May 2005
  - Statewide Public Opinion Survey: Alcohol Issues and Policies (phone survey of 4,600 residents of Wyoming – Report released November 2006
  - Evaluation of Alcohol Factors in Custodial Arrests in Wyoming - 2006: Phase I (data collection), Phase II (Analysis, Findings and Strategies)
  - Evaluation of Alcohol Factors in Custodial Arrests in Wyoming – 2007, 2008, 2009
  - Alcohol and Crime in Wyoming: 2006 – 2008
  - Alcohol and Crime in Wyoming: 2010 - 2020
  - Wyoming Youth and Alcohol Reports: 2010-2020
  - Project Manager for the Enforcing Underage Drinking Laws Program – September 2007 to May 2009
  - Project Manager for WY-CIA Wyoming Communities in Action – Phase I, Phase II – September 2007 to May 2009
  - Project Manager for Reducing Underage Drinking and Driving – October 2007 to September 2009
  - Project Coordinator for Project Safe Neighborhoods in Wyoming: A national initiative directed by the US Department of Justice aimed at reducing gun crimes and violence in this country - 2006 through 2012.
- Facilitator/Coordinator for the Wyoming Seat Belt Coalition – December 2006 to 2014
- Administration and coordination of WYDOT-Highway Safety’s Selective Traffic Enforcement Program Grants for Wyoming law enforcement agencies– December 2008 to October 2020
- Facilitator for the Wyoming Safe Communities Project – FY 2012
- Facilitator/Coordinator for the Governor’s Council on Impaired Driving – December 2011 to October 2020